

Counter top



Monitor adaption

Colours to choose

Max. load monitor adaption

Part number

Elo Touch adaptation

decorative parts RAL 5013 cobalt blue / RAL 7024 graphite grey
 aluminum parts RAL 9016 traffic white / RAL 9002 grey white

18 kg / 39.7 lbs

Counter top with base plate to mount to desk or even surfaces (see illustration)

- T-HG5-60.CD_220 height 220 mm / 8.7"
- T-HG5-60.CD_280 height 280 mm / 11.0"
- T-HG5-60.CD_340 height 340 mm / 13.4"


Counter top without base plate to mount to desk or even surfaces (see illustration)

- T-HG5-61.CD_220 height 220 mm / 8.7"
- T-HG5-61.CD_280 height 280 mm / 11.0"
- T-HG5-61.CD_340 height 340 mm / 13.4"

Counter top free-standing

- T-HG5-69.CD_220 height 220 mm / 8.7"
- T-HG5-69.CD_280 height 280 mm / 11.0"
- T-HG5-69.CD_340 height 340 mm / 13.4"

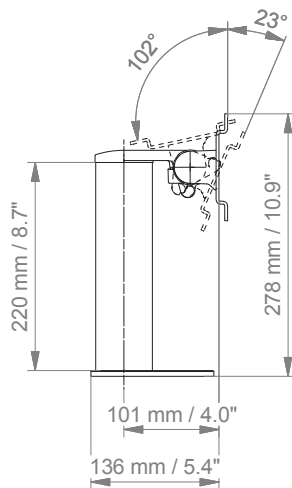
All free-standing counter tops have to be tip-tested for stability depending on the weight of the monitor!



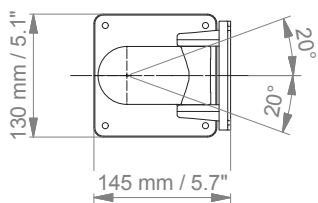
Counter top

Technical data - counter top with base plate

SIDE VIEW



TOP VIEW



How to create part numbers

Part numbers can be easily created by following the steps below:

Please replace the letters in **green** with the part no. code as per your requirements.

1. Components' grounding:

| | | |
|---|---|--------------|
| S | = | not grounded |
| A | = | grounded |

2. Choose the arm version required:

| | | |
|---------------|---|--|
| 910G5 | = | flush mount |
| 224G5 / 230G5 | = | support arm pivot |
| 33030G5 | = | extended pivot arm light duty |
| 431G5 | = | height adjustable arm |
| 73130G5 | = | extended height adjustable arm |
| 531G5 | = | high position height adjustable arm |
| 83130G5 | = | extended high position height adjustable arm |

3. Specify where you want to mount the arm and select the fixing (Y):

| | | |
|-----|---|--|
| 1V | = | pole ø 23 - 40 mm / 0.9 - 1.6" |
| 1 | = | pole ø 25 mm / 1.0" |
| 1F | = | pole ø 35 mm / 1.4" |
| 1C | = | pole ø 38 mm / 1.5" |
| 2F | = | horizontal rails 10 x 25, 8 x 35, 10 x 30, 10 x 50 mm |
| 3 | = | vertical rail 10 x 25 mm |
| 3DR | = | dual vertical rails, distance 150 mm/ 5.9" |
| 3TX | = | dual vertical rails, distance 225 mm/ 8.9" |
| 4V | = | vertical wall channel |
| 4U | = | vertical wall channel for arms with high mounting position |
| 13 | = | Mindray medical supply units |
| 17 | = | Amico pendants & headwalls |
| 9 | = | Löwenstein Medical anaesthesia machine |
| 4K | = | anaesthesia machine with existing channel |

How to create part numbers

4. Choose the colour requested for decorative parts (C):

gr = RAL 7024 (dark grey)
 bl = RAL 5013 (blue)

5. Choose the colour requested for the aluminium die-cast parts (D):

1 = RAL 9016 (pure white)
 2 = RAL 9002 (grey white)

6. Specify the spring depending on the weight of your monitor/ device - only with height adjustable arms (X):

95 = 4 - 9 kg / 8.8 - 19.8 lbs

Example

| 01 Grounding | | 02 Arm version | | 03 Fixing | | 04 & 05 Colour | | 06 Spring tension |
|-----------------|---|-------------------|---|--------------|---|-------------------|---|----------------------|
| A | - | 431G5 | - | Y | . | CD | - | X |
| A | - | 431G5 | - | 4V | . | gr1 | - | 95 |

General notes

Monitor Adaptations

Back mounted adaptation for Mindray Elo Touch monitors.

Components' grounding

All arms with integrated cable management are equipped with **component grounding**. No grounding is required for arms with external or semi-integrated cable management with cables not being led through joints.

Load capacity

All **height adjustable arms** have a load capacity of 22 kg / 48.5 lbs. Rear mounted monitor adaptations and horizontally mounted 5" plunge plates accept a maximum monitor weight of 18 kg / 39.7 lbs. An additional 4 kg / 8.8 lbs may be mounted on a down post underneath the front swivel part. Depending on material and tensile factor all weight indications have a 4-fold and / or 6-fold safety factor according to EN 60601-1, 3rd Edition regulations.

Custom-designed solutions and MRI applications

Please contact us for **custom-designed** solutions.

Product marking

All CIM products are CE marked. As **medical product risk class 1** and they conform with the regulations MDD 93/42 ECC and EN 60601-1, 3rd Edition. TUEV reports for numerous products especially for anaesthesia applications guarantee electrical and mechanical safety of our products and are available upon request.