



MOUNTING REFERENCE GUIDE

Mounting Kit for Dräger Infinity Omega Monitoring

CIM Cable Integrated Mounting System



General notes

Monitor Adaptations

The monitor adaptation VESA 75/100 is provided with a spring for counter-balance.

The 5" plunge plate is intended to accept bottom-mounted monitors. For monitors from Dräger no special mounting adapters are required.

Components' grounding

All arms with integrated cable management are equipped with **component grounding**. No grounding is required for arms with external or semi-integrated cable management with cables not being led through joints.

Load capacity

All **height adjustable arms** have a load capacity of 22 kg / 48.5 lbs. Rear mounted monitor adaptations and horizontally mounted 5" plunge plates accept a maximum monitor weight of 18 kg / 39.7 lbs. An additional 4 kg / 8.8 lbs may be mounted on a down post underneath the front swivel part. Depending on material and tensile factor all weight indications have a 4-fold and/ or 6-fold safety factor according to IEC 60601-1 standards.

Custom-designed solutions and MRI applications

Please contact us for **custom-designed** solutions.

Product marking

All CIM products are CE marked. As **medical product risk class 1** they are conform with the regulations (EU) 2017/745 (MDR) and IEC 60601-1. Other standards of the IEC 60601 series are not applicable to our products, regardless of their version.

Warranty

All CIM arms have a 5-year warranty to be free of defects in material and functionality from the date of delivery.

Non-height adjustable arm

Pivot and extended pivot arms offer **full cable integration** and easy cleaning for **infection control** in all critical care areas in the clinical environment. Our **5-years warranty** guarantees reliable, trouble-free and maintenance-free operation. The swivel function at the fixing point as well as the **tilt/ swivel function** of the monitor adaptation offers optimum positioning of your device. The extended pivot arm is a two-part arm with central pivot point between the two arm sections. All bottom-mounted monitors have the safety feature of a **20° tilt stop**.

Height adjustable arm

The height adjustable arm offers **full cable integration**, one-wipe clean surfaces and our **5-year warranty** on the entirety of the product. Vertically and horizontally adjustable, the arm offers optimal positioning of your device. A constant viewing angle when vertically adjusted is guaranteed by a parallel linkage.

Weight-optimized springs counter-balance

the monitor without making any adjustments. All bottom-mounted monitors have the safety feature of a **20° tilt stop**. Individual rotational stops may be integrated in any joint.

To provide the perfect combination of arm and monitor, the CIM articulated height adjustable arm has a simple quarter-turn lock to hold the arm safely in position when removing the monitor. Furthermore the arm is equipped with the unique safety feature of a slow-release gas spring. Should anybody try to remove the monitor before locking the arm in position, the arm will only rise at a slow and even tempo.

SAFETY

Height adjustable arm kit for C700 and Delta



Height adjustable arm kit for C700 and Delta

Kit number

P-DR-0001-4S.bl1

Monitor adaption

Colours

Maximum load capacity support arm

Maximum load monitor adaptation

Product weight

Keyboard tray

Balancing range

Z-bracket VESA 75/100 and keyboard / mouse tray

decorative parts RAL 5013 cobalt blue

aluminum parts RAL 9016 traffic white

17 kg / 37.5 lbs

17 kg / 37.5 lbs

9.4 kg / 20.7 lbs

480 x 220 mm / 18.9 x 8.7" retractable mouse tray

1300 N (5 - 9 kg / 11 - 19.8 lbs)



Part number

Consisting of the following parts:

A-431M-4S.bl1_130_RC height adjustable arm with fold-up Z-bracket

Z-PS2-4Z.1 power supply enclosure double

Please order the wall channel separately.



Monitor adaption

Colours

Maximum load capacity support arm

Maximum load monitor adaptation

Product weight

Balancing range

5" plunge plate with tilt function

decorative parts RAL 5013 cobalt blue

aluminum parts RAL 9016 traffic white

22 kg / 48.5 lbs

21.5 kg / 47.4 lbs

6.1 kg / 13.4 lbs

950 N (3.5 - 8.5 kg / 7.7 - 18.7 lbs)



Part number

Consisting of the following parts:

A-73130A-4S.bl1_95 extended height adjustable arm

Z-KH3-71.1 triple cable hook

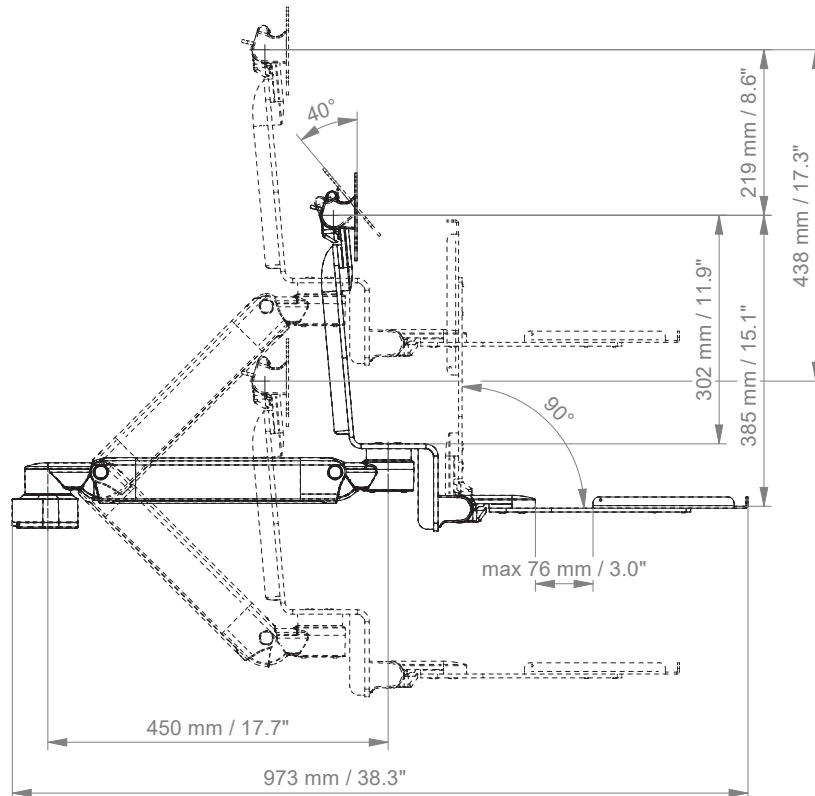
DR-PS-4Z.1 mounting plate for Dräger power supply Delta

Please order the wall channel separately.

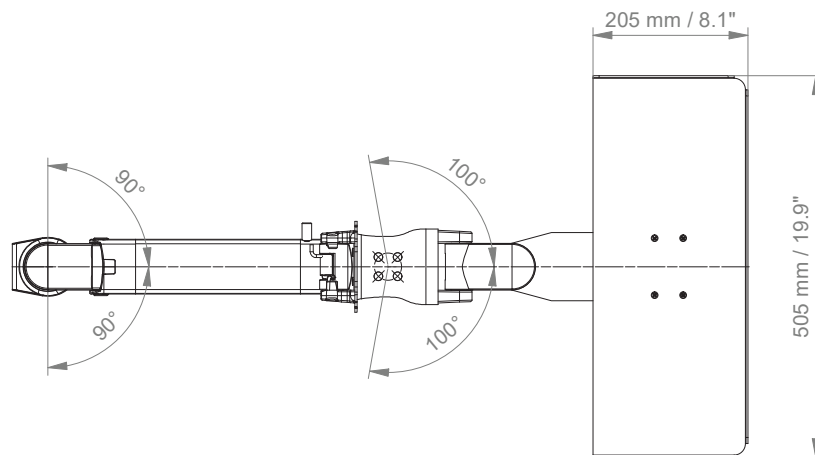
Height adjustable arm kit for C700 and Delta

Technical data height adjustable arm

SIDE VIEW



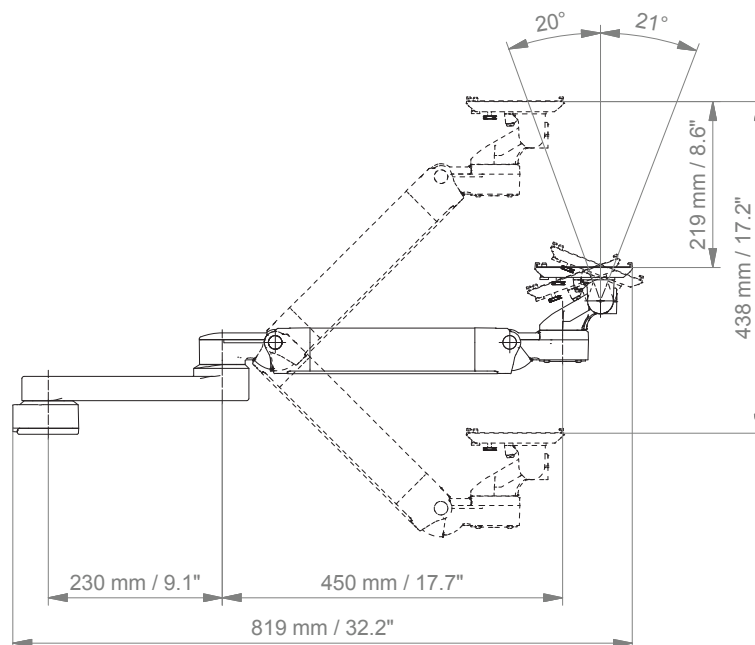
TOP VIEW



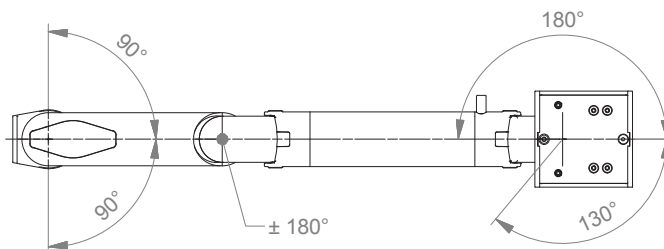
Height adjustable arm kit for C700 and Delta

Technical data extended height adjustable arm

SIDE VIEW



TOP VIEW





CIM med GmbH

Euro-Industriepark
Margot-Kalinke-Str. 9
80939 Munich / Germany

T +49 89. 978 94 08-0

CIM med Inc.

2024 E Independence Commerce Dr
Matthews, NC 28105 / USA

T +1 855 895 4722

info@cim-med.com

www.cim-med.com

