

Extended height adjustable arm with bracket for GE frame F5



Monitor adaption	VESA 75/100
Height adjustment	slow-flowing spring, parallel linkage for a constant viewing angle
Colours	decorative parts RAL 7024 graphite grey aluminum parts RAL 9002 grey white
Max. load capacity support arm	21 kg / 46.3 lbs
Max. load monitor adaptation	18 kg / 39.7 lbs
Product weight	5.8 kg / 12.8 lbs
Balancing range	1300 N (7.5-13 kg / 16.5-28.7 lbs)

Kit number **P-GE-0002-0.gr2_130**

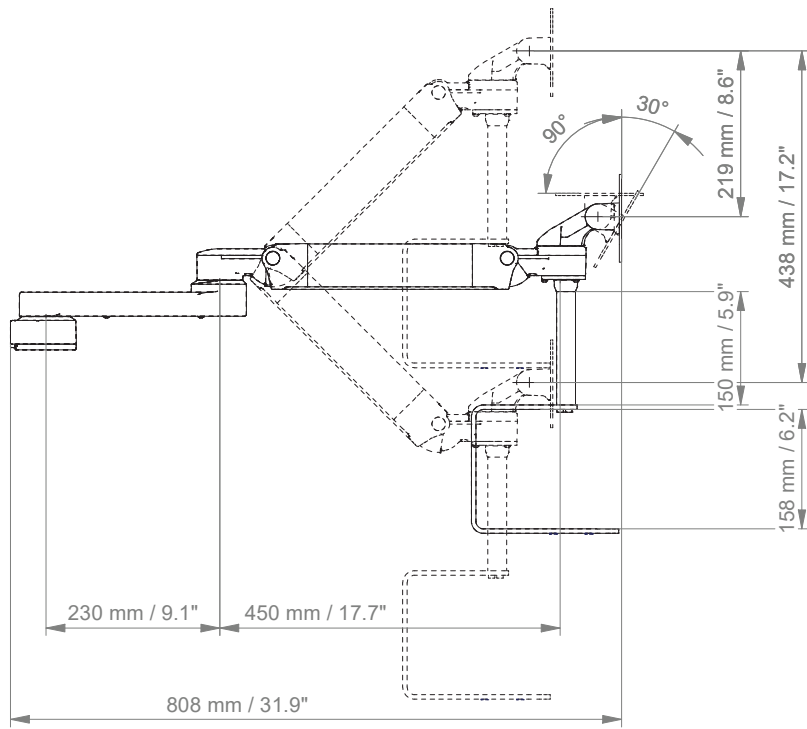
Part number Consisting of the following parts:
 A-73130G-0.gr2_130 extended height adjustable arm
 GE-MB-DPR-71.2_150 bracket for GE frame F5 with down post rotatable 150 mm

General notes All CIM products are CE marked. As medical product risk class 1 and they conform with the regulations EU 2017/745 MDR and IEC 60601-1, 3rd Edition.

Extended height adjustable arm with bracket for GE frame F5

Technical data extended height adjustable arm

SIDE VIEW



TOP VIEW

