

Cart light duty kit I

MD

Kit configuration



Notebook tray

360 x 280 mm / 14.2 x 11", with tilt function

Cart light duty

5-star base aluminum base with counter weight
double wheel castors, ø 100 mm / 3.9", 2 lockable
column to accept components and accessories on opposite sides

Colours

decorative parts RAL 5013 cobalt blue
base RAL 9016 traffic white
handle RAL 9016 traffic white

Max. load capacity

3 kg / 6.6 lbs notebook tray
1 kg / 2.2 lbs keyboard tray
10 kg / 22 lbs basket

Kit number

R-002TN.b11_285960

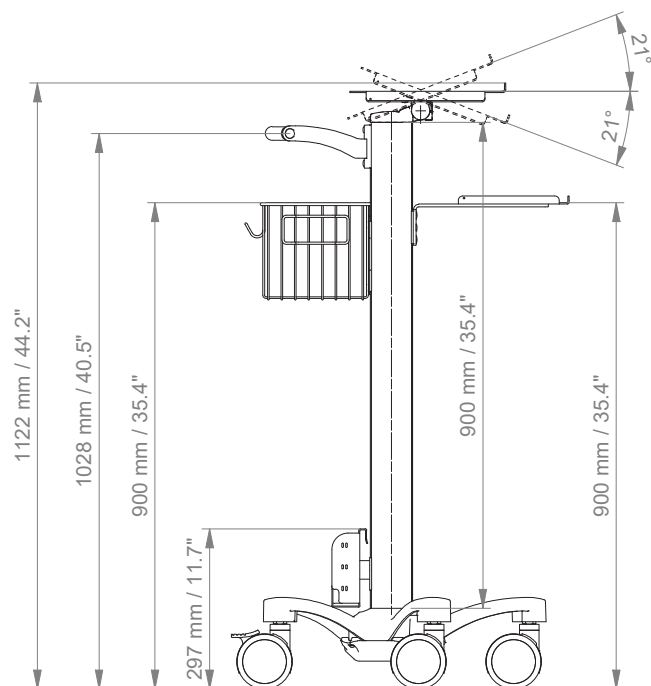
Consisting of the following parts:

R-002TN.b11	cart light duty
Z-51-4Z.1	basket big 300 x 200 x 180 mm / 11.8 x 7.9 x 7.1"
Z-HD-4.w1	handle for carts
Z-E-4Z.1_58	keyboard tray 580 x 200 mm / 22.8 x 7.9"
Z-NH-4Z.1	power supply holster

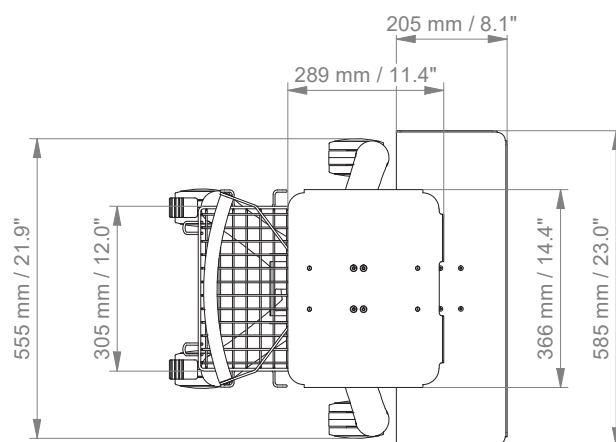
Cart light duty kit I

Technical data

SIDE VIEW



TOP VIEW



How to create part numbers

Part numbers can be easily created by following the steps below:

Please replace the letters in **green** with the part no. code as per your requirements.

1. Components' grounding:

A = grounded

2. Choose the arm version required:

224TN / 230TN = support arm pivot
 33030TN = extended pivot arm light duty
 431TN = height adjustable arm
 73130TN = extended height adjustable arm

3. Specify where you want to mount the arm and select the fixing (Y):

1V = pole ø 23 - 40 mm / 0.9 - 1.6"
 1 = pole ø 25 mm / 1.0"
 1B = pole ø 30 mm / 1.2"
 1F = pole ø 35 mm / 1.4"
 1C = pole ø 38 mm / 1.5"
 2F = horizontal rails 10 x 25, 8 x 35, 10 x 30, 10 x 50 mm
 3 = vertical rail 10 x 25 mm
 4S = vertical wall channel
 9 = Löwenstein Medical / ITD / mounting channel
 13 = Mindray medical supply units
 17 = Amico pendants & headwalls

4. Choose the colour requested for decorative parts (C):

gr = RAL 7024 (graphite grey)
 bl = RAL 5013 (cobalt blue)

How to create part numbers

5. Choose the colour requested for the aluminium die-cast parts (D):

- | | | |
|---|---|--------------------------|
| 1 | = | RAL 9016 (traffic white) |
| 2 | = | RAL 9002 (grey white) |

6. Specify the spring depending on the weight of your monitor/ device - only with height adjustable arms (X):

- | | | |
|----|---|--------------------------|
| 60 | = | 1 - 4 kg / 2.2 - 8.8 lbs |
|----|---|--------------------------|
-

Example

01 Grounding		02 Arm version		03 Fixing		04 & 05 Colour		06 Spring tension
A	-	431TN	-	Y	.	CD	—	60
A	-	431TN	-	4S	.	gr1	—	60

General notes

Components' grounding

All arms with integrated cable management are equipped with **component grounding**. No grounding is required for arms with external or semi-integrated cable management with cables not being led through joints.

Load capacity

All **height adjustable arms** have a load capacity of 22 kg / 48.5 lbs. Rear mounted monitor adaptations and horizontally mounted 5" plunge plates accept a maximum monitor weight of 18 kg / 39.7 lbs. An additional 4 kg / 8.8 lbs may be mounted on a down post underneath the front swivel part. Depending on material and tensile factor all weight indications have a 4-fold and/ or 6-fold safety factor according to IEC 60601-1 standards.


Custom-designed solutions and MRI applications

Please contact us for **custom-designed** solutions.

Product marking

All products which are classified as medical product risk class 1 are CE marked. As **medical product risk class 1** they are conform with the regulations (EU) 2017/745 (MDR) and IEC 60601-1. Other standards of the IEC 60601 series are not applicable to our products, regardless of their version.

MD A stand-alone product that is already classified as a medical product class 1 before being integrated into an overall medical device. The product is CE-marked. A declaration of conformity is available.

 Accessories or spare parts that have no independent function and are therefore not subject to the MDR. These products are not CE-marked. A declaration of conformity is not required.

Warranty

All CIM products have a 5-year warranty to be free of defects in material and functionality from the date of delivery.