

Counter top

MD


Monitor adaption

5" plunge plate

Colours to choose **CD**

| | |
|------------------|---|
| decorative parts | RAL 5013 cobalt blue / RAL 7024 graphite grey |
| aluminum parts | RAL 9016 traffic white / RAL 9002 grey white |

Max. load monitor adaptation

18 kg / 39.7 lbs

Part number

Counter top with base plate (see illustration)

| | |
|-------------------------|----------------------|
| T-HA-60. CD _50 | height 50 mm / 2" |
| T-HA-60. CD _120 | height 120 mm / 4.7" |

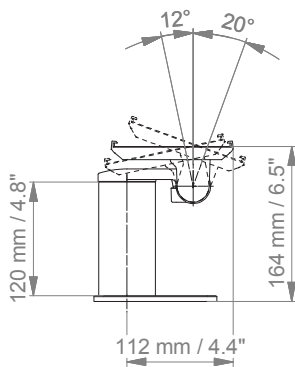
Counter top without base plate

| | |
|-------------------------|----------------------|
| T-HA-69. CD _50 | height 50 mm / 2" |
| T-HA-69. CD _120 | height 120 mm / 4.7" |

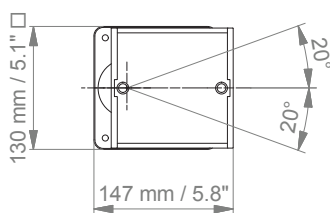
Counter top

Technical data - with base plate

SIDE VIEW



TOP VIEW



How to create part numbers

Part numbers can be easily created by following the steps below:

Please replace the letters in **green** with the part no. code as per your requirements.

1. Components' grounding:

A = grounded

2. Choose the arm version required:

| | | |
|-------------|---|--|
| 224A / 230A | = | support arm pivot |
| 33030A | = | extended pivot arm light duty |
| H33030A | = | extended pivot arm heavy duty |
| 431A | = | height adjustable arm |
| 73130A | = | extended height adjustable arm |
| 531A | = | high position height adjustable arm |
| 83130A | = | extended high position height adjustable arm |

3. Specify where you want to mount the arm and select the fixing (Y):

| | | |
|----|---|---|
| 1V | = | pole ø 23 - 40 mm / 0.9 - 1.6" |
| 1 | = | pole ø 25 mm / 1.0" |
| 1B | = | pole ø 30 mm / 1.2" |
| 1F | = | pole ø 35 mm / 1.4" |
| 1C | = | pole ø 38 mm / 1.5" |
| 2F | = | horizontal rails 10 x 25, 8 x 35, 10 x 30, 10 x 50 mm |
| 3 | = | vertical rail 10 x 25 mm |
| 4S | = | vertical wall channel |
| 9 | = | Löwenstein Medical / ITD / mounting channel |
| 13 | = | Mindray medical supply units |
| 17 | = | Amico pendants & headwalls |

4. Choose the colour requested for decorative parts (C):

| | | |
|----|---|--------------------------|
| gr | = | RAL 7024 (graphite grey) |
| bl | = | RAL 5013 (cobalt blue) |

How to create part numbers

5. Choose the colour requested for the aluminium die-cast parts (D):

| | | |
|---|---|--------------------------|
| 1 | = | RAL 9016 (traffic white) |
| 2 | = | RAL 9002 (grey white) |

6. Specify the spring depending on the weight of your monitor/ device - only with height adjustable arms (X):

| | | |
|-----|---|--------------------------------|
| 60 | = | 2 - 5 kg / 4.4 - 11 lbs |
| 95 | = | 4 - 9 kg / 8.8 - 19.8 lbs |
| 110 | = | 4.5 - 12.5 kg / 9.9 - 27.6 lbs |
| 130 | = | 7.5 - 13 kg / 16.5 - 28.7 lbs |
| 160 | = | 12.5 - 19 kg / 27.6 - 41.9 lbs |
| 175 | = | 13 - 16 kg / 28.7 - 35.3 lbs |
| 220 | = | 16 - 22 kg / 35.3 - 48.5 lbs |

Example

| 01 Grounding | | 02 Arm version | | 03 Fixing | | 04 & 05 Colour | | 06 Spring tension |
|-----------------|---|-------------------|---|--------------|---|-------------------|---|----------------------|
| A | - | 431A | - | Y | . | CD | - | X |
| A | - | 431A | - | 4S | . | gr1 | - | 95 |

General notes

Monitor adaptations

The 5" plunge plate is intended to accept bottom-mounted monitors. Please note that a special mounting adapter is required for some monitors. The mounting adapter is mounted to the bottom and slides into the 5" plunge plate. For monitors from **Dräger** and **GE Healthcare** no special mounting adapters are required. For the monitors from **Mindray**, **Nihon Kohden**, **Spacelabs** and **Philips Sure Signs/ Vital Signs** mounting adapters are necessary to mount the monitors. For **Philips IntelliVue series** please refer to the separate catalogue: Philips Monitoring IntelliVue Series.

Components' grounding

All arms with integrated cable management are equipped with **component grounding**. No grounding is required for arms with external or semi-integrated cable management with cables not being led through joints.

Load capacity

All **height adjustable arms** have a load capacity of 22 kg / 48.5 lbs. Rear mounted monitor adaptations and horizontally mounted 5" plunge plates accept a maximum monitor weight of 18 kg / 39.7 lbs. An additional 4 kg / 8.8 lbs may be mounted on a down post underneath the front swivel part. Depending on material and tensile factor all weight indications have a 4-fold and/ or 6-fold safety factor according to IEC 60601-1 standards.

Custom-designed solutions and MRI applications

Please contact us for **custom-designed** solutions.

Product marking

All products which are classified as medical product risk class 1 are CE marked. As **medical product risk class 1** they are conform with the regulations (EU) 2017/745 (MDR) and IEC 60601-1. Other standards of the IEC 60601 series are not applicable to our products, regardless of their version.

MD A stand-alone product that is already classified as a medical product class 1 before being integrated into an overall medical device. The product is CE-marked. A declaration of conformity is available.

NO Accessories or spare parts that have no independent function and are therefore not subject to the MDR. These products are not CE-marked. A declaration of conformity is not required.

Warranty

All CIM arms have a 5-year warranty to be free of defects in material and functionality from the date of delivery.