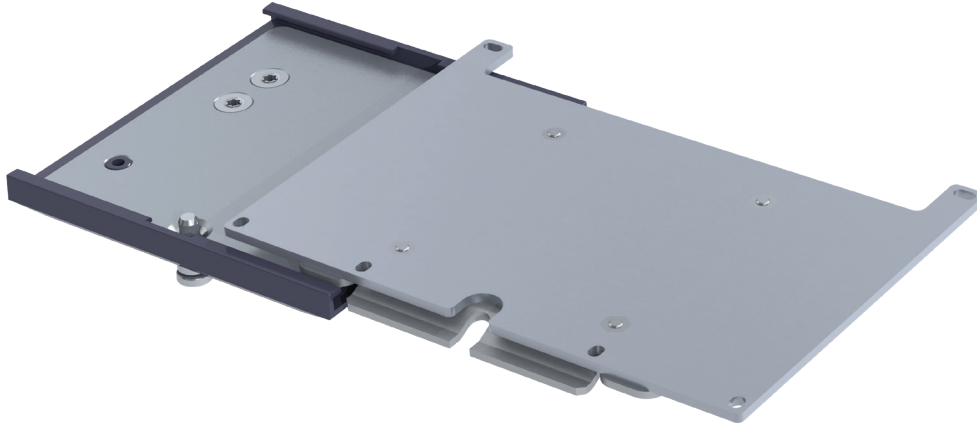


Monitor-Specific Mounting Adapter Spacelabs



Monitor Description	Description	Part No.	
mCare / Ultraview SL2400 /SL2600	Mounting adapter for quick release arms	SL-AP-1050	MD
élance	Mounting adapter for 2.5" plunge plate	SL-AP-EL	MD

The Ultraview SL2700/SL2800 is mounted by a VESA 75/100 standard. Mounting solutions are shown in the catalogue: VESA 75/100 Adaptation.

Adapter plates are only supplied with CIM support arms, counters tops or carts. Exceptions can be made on request, however, please note that price and part number will change when sold separately (K-SL-AP-...).