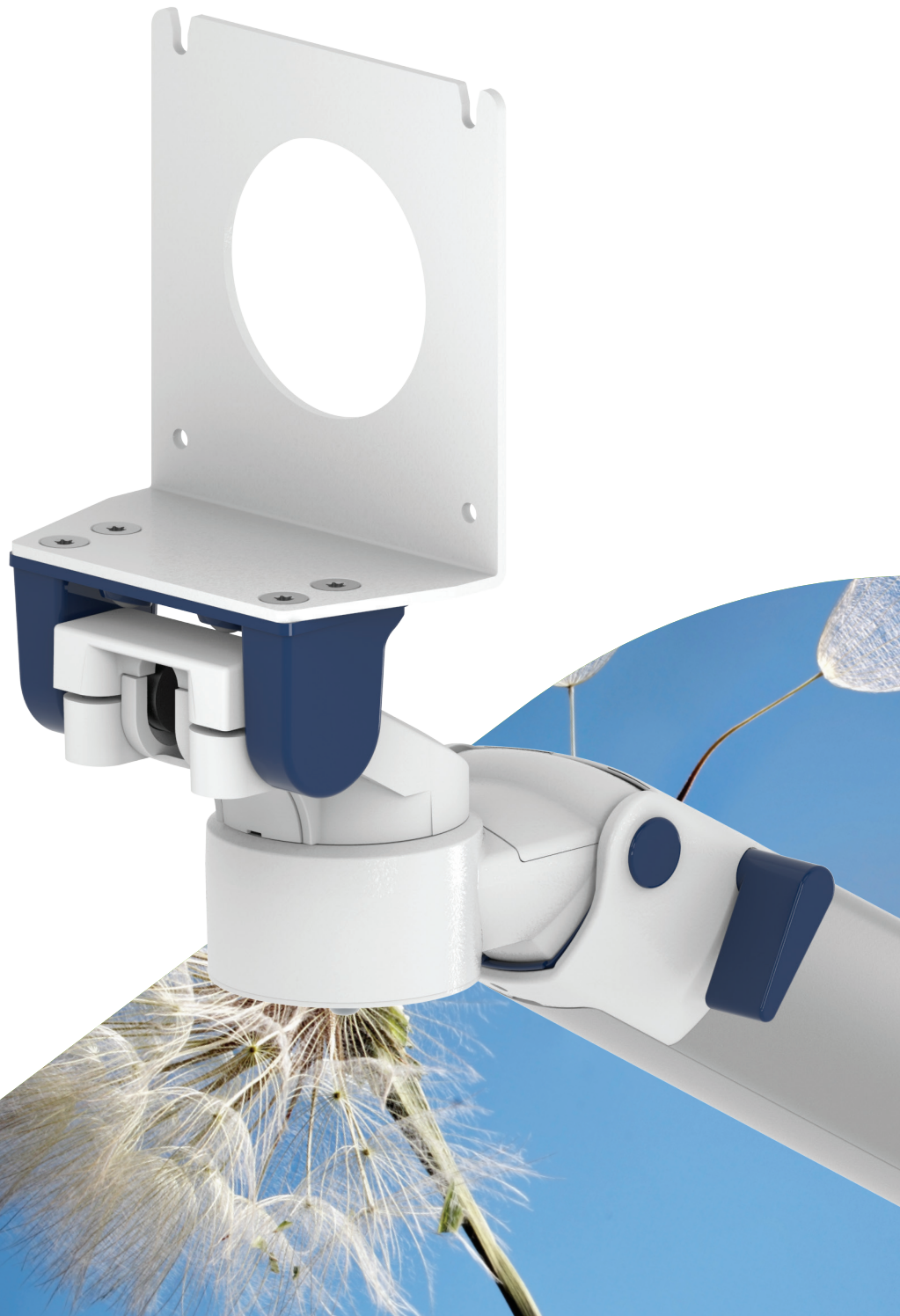




MOUNTING REFERENCE GUIDE

Fukuda Denshi Monitoring

CIM Cable Integrated Mounting System



THINK BEFORE
YOU PRINT



Content

General notes	3
How to create part numbers	4
Product highlights	6
Support arm pivot	7
Extended pivot arm heavy duty	9
Height adjustable arm	11
Extended height adjustable arm	13
Brackets for super unit and super unit with gas module	15
Wall-mounted bracket for parameter unit	17
Support arm pivot for parameter unit	19
Cart light duty - Fukuda bracket	21
Cart light duty - monitoring kit	23
Monitor-specific mounting adapter	25
Fixings	26

General notes

Components' grounding

All arms with integrated cable management are equipped with **component grounding**. No grounding is required for arms with external or semi-integrated cable management with cables not being led through joints.

Load capacity

All **height adjustable arms** have a load capacity of 22 kg / 48.5 lbs. Rear mounted monitor adaptations and horizontally mounted 5" plunge plates accept a maximum monitor weight of 18 kg / 39.7 lbs. An additional 4 kg / 8.8 lbs may be mounted on a down post underneath the front swivel part. Depending on material and tensile factor all weight indications have a 4-fold and/ or 6-fold safety factor according to IEC 60601-1 standards.

Custom-designed solutions and MRI applications

Please contact us for **custom-designed** solutions.

Product marking

All products which are classified as medical product risk class 1 are CE marked. As **medical product risk class 1** they are conform with the regulations (EU) 2017/745 (MDR) and IEC 60601-1. Other standards of the IEC 60601 series are not applicable to our products, regardless of their version.

MD A stand-alone product that is already classified as a medical product class 1 before being integrated into an overall medical device. The product is CE-marked. A declaration of conformity is available.

MD Accessories or spare parts that have no independent function and are therefore not subject to the MDR. These products are not CE-marked. A declaration of conformity is not required.

Warranty

All CIM products have a 5-year warranty to be free of defects in material and functionality from the date of delivery.

How to find the right product for your needs?

No problem with our configurator

<https://cim-configurator.com>



How to create part numbers

Part numbers can be easily created by following the steps below:

Please replace the letters in **green** with the part no. code as per your requirements.

1. Components' grounding:

A = grounded

2. Choose the arm version required:

224FK / 230FK = support arm pivot
 224FKU / 230FKU = support arm pivot for parameter units
 H33030FK = extended pivot arm heavy duty
 431FK = height adjustable arm
 73130FK = extended height adjustable arm

3. Specify where you want to mount the arm and select the fixing (Y):

1V = pole ø 23 - 40 mm / 0.9 - 1.6"
 1 = pole ø 25 mm / 1.0"
 1B = pole ø 30 mm / 1.2"
 1F = pole ø 35 mm / 1.4"
 1C = pole ø 38 mm / 1.5"
 2F = horizontal rails 10 x 25, 8 x 35, 10 x 30, 10 x 50 mm
 3 = vertical rail 10 x 25 mm
 4S = vertical wall channel
 9 = Löwenstein Medical / ITD / mounting channel
 13 = Mindray medical supply units
 17 = Amico pendants & headwalls
 19 = Dräger Ambia pendants & headwalls

How to create part numbers

4. Choose the colour requested for decorative parts (C):

gr = RAL 7024 (graphite grey)
bl = RAL 5013 (cobalt blue)

5. Choose the colour requested for the aluminium die-cast parts (D):

1 = RAL 9016 (traffic white)

6. Specify the spring depending on the weight of your monitor/ device - only with height adjustable arms (X):

130 = 7.5 - 13 kg / 16.5 - 28.7 lbs
160 = 12.5 - 19 kg / 27.6 - 41.9 lbs
175 = 13 - 16 kg / 28.7 - 35.3 lbs
220 = 16 - 22 kg / 35.3 - 48.5 lbs

Example

01 Grounding		02 Arm version		03 Fixing		04 & 05 Colour		06 Spring tension
A	-	431FK	-	Y	.	C1	-	X
A	-	431FK	-	4S	.	gr1	-	130

Product highlights

Non-height adjustable arm

Pivot and extended pivot arms offer **full cable integration** and easy cleaning for **infection control** in all critical care areas in the clinical environment. Our **5-years warranty** guarantees reliable, trouble-free and maintenance-free operation. The swivel function at the fixing point as well as the **tilt/ swivel function** of the monitor adaptation offers optimum positioning of your device. The extended pivot arm is a two-part arm with central pivot point between the two arm sections. All bottom-mounted monitors have the safety feature of a **20° tilt stop**.

Height adjustable arm

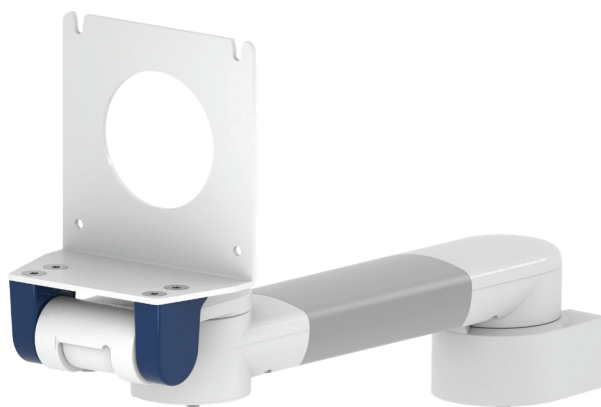
The height adjustable arm offers **full cable integration**, one-wipe clean surfaces and our **5-year warranty** on the entirety of the product. Vertically and horizontally adjustable, the arm offers optimal positioning of your device. A constant viewing angle when vertically adjusted is guaranteed by a parallel linkage. **Weight-optimized springs counter-balance** the monitor without making any adjustments. All bottom-mounted monitors have the safety feature of a **20° tilt stop**. Individual rotational stops may be integrated in any joint.

To provide the perfect combination of arm and monitor, the CIM articulated height adjustable arm has a simple quarter-turn lock to hold the arm safely in position when removing the monitor. Furthermore the arm is equipped with the unique safety feature of a slow-release gas spring. Should anybody try to remove the monitor before locking the arm in position, the arm will only rise at a slow and even tempo.

SAFETY

Support arm pivot

MD



Monitor adaption

Fukuda mounting adapter

Colours to choose C

decorative parts RAL 5013 cobalt blue / RAL 7024 graphite grey
aluminum parts RAL 9016 traffic white

Max. load capacity support arm

18 kg / 39.7 lbs

Max. load monitor adaptation

18 kg / 39.7 lbs

Product weight

arm type 240 arm type 300
2.0 kg / 4.4 lbs 2.1 kg / 4.6 lbs

Part number

arm type 240 arm type 300
A-224FK-Y.C1 A-230FK-Y.C1

Fixings Y

details page 26



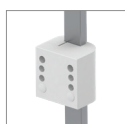
4S

Adapter for
vertical wall channel



2F

Horizontal rail clamp



3

Vertical rail clamp



1V

Universal pole clamp



1
1B
1F
1C

Fixed pole clamp



13

Adapter for Mindray
medical supply units



17

Adapter for Amico
pendants & headwalls



19

Adapter for Dräger Ambia
pendants & headwalls



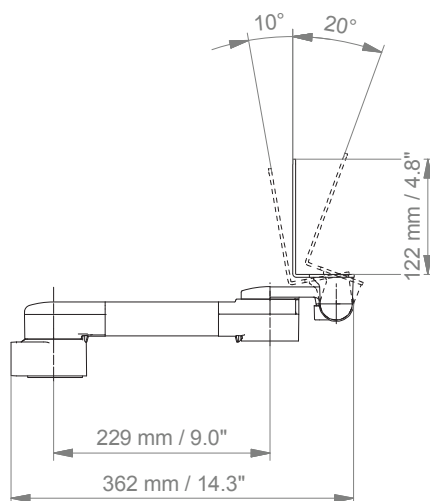
9

Adapter for Löwenstein Medical /
ITD / mounting channel

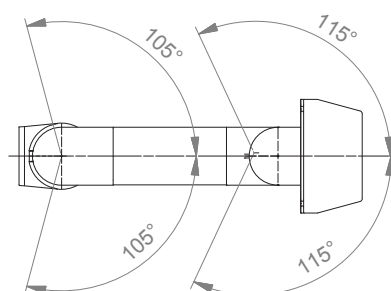
Support arm pivot

Technical data - arm type 300

SIDE VIEW

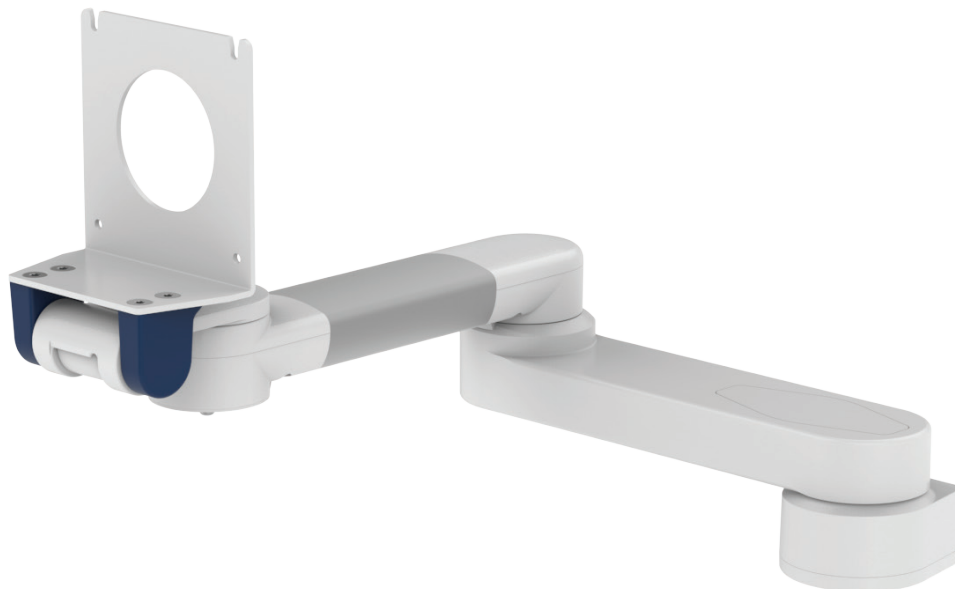


TOP VIEW



Extended pivot arm heavy duty

MD



Monitor adaption

Fukuda mounting adapter

Colours to choose C

decorative parts RAL 5013 cobalt blue / RAL 7024 graphite grey
aluminum parts RAL 9016 traffic white

Max. load capacity support arm

18 kg / 39.7 lbs

Max. load monitor adaptation

18 kg / 39.7 lbs

Product weight

3.3 kg / 7.3 lbs

Part number

A-H33030FK-Y.C1

Fixings Y

details page 26



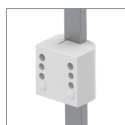
4S

Adapter for
vertical wall channel



2F

Horizontal rail clamp



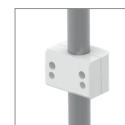
3

Vertical rail clamp



1V

Universal pole clamp



1
1B
1F
1C

Fixed pole clamp



13

Adapter for Mindray
medical supply units



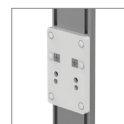
17

Adapter for Amico
pendants & headwalls



19

Adapter for Dräger Ambia
pendants & headwalls



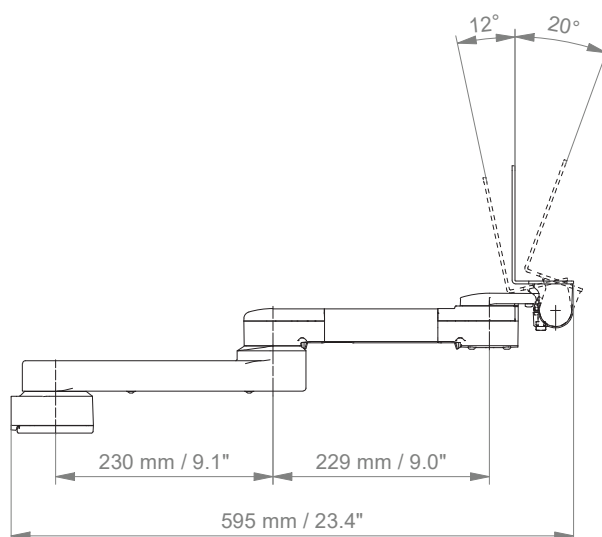
9

Adapter for Löwenstein Medical /
ITD / mounting channel

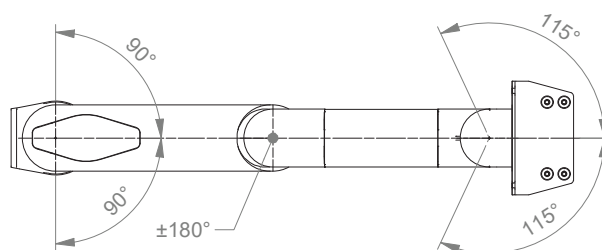
Extended pivot arm heavy duty

Technical data

SIDE VIEW



TOP VIEW



Height adjustable arm

MD



Monitor adaption

Fukuda mounting adapter

Height adjustment

slow-flowing spring, parallel linkage for a constant viewing angle

Colours to choose C

decorative parts RAL 5013 cobalt blue / RAL 7024 graphite grey
aluminum parts RAL 9016 traffic white

Max. load capacity support arm

22 kg / 48.5 lbs

Max. load monitor adaptation

18 kg / 39.7 lbs

Product weight

4.0 kg / 8.8 lbs

Balancing range X

1300 N (7.5-13 kg / 16.5-28.7 lbs); 1600 N (12.5-19 kg / 27.6 - 41.9 lbs);
1750 N (13-16 kg / 28.7-35.3 lbs); 2200 N (16-22 kg / 35.3-48.5 lbs)

Part number

A-431FK-Y.C1_X

Fixings Y

details page 26



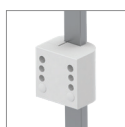
4S

Adapter for
vertical wall channel



2F

Horizontal rail clamp



3

Vertical rail clamp



1V

Universal pole clamp



1
1B
1F
1C

Fixed pole clamp



13

Adapter for Mindray
medical supply units



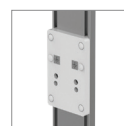
17

Adapter for Amico
pendants & headwalls



19

Adapter for Dräger Ambia
pendants & headwalls



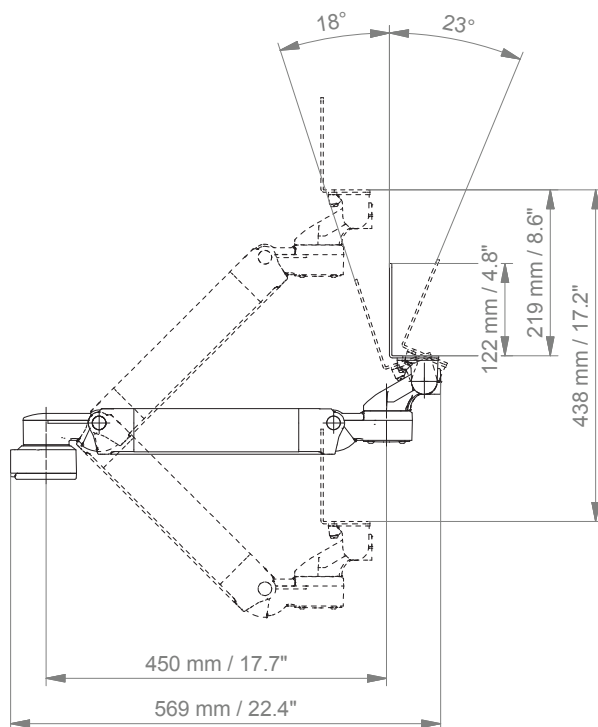
9

Adapter for Löwenstein Medical /
ITD / mounting channel

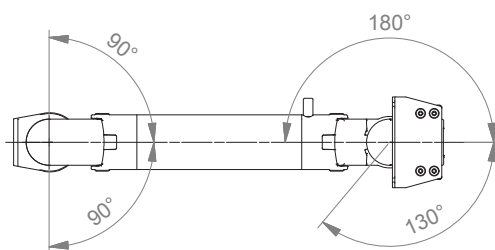
Height adjustable arm

Technical data

SIDE VIEW



TOP VIEW



Extended height adjustable arm

MD



Monitor adaption

Fukuda mounting adapter

Height adjustment

slow-flowing spring, parallel linkage for a constant viewing angle

Colours to choose C

decorative parts RAL 5013 cobalt blue / RAL 7024 graphite grey
aluminum parts RAL 9016 traffic white

Max. load capacity support arm

22 kg / 48.5 lbs

Max. load monitor adaptation

18 kg / 39.7 lbs

Product weight

5.1 kg / 11.2 lbs

Balancing range X

1300 N (7.5-13 kg / 16.5-28.7 lbs); 1600 N (12.5-19 kg / 27.6 - 41.9 lbs);
1750 N (13-16 kg / 28.7-35.3 lbs); 2200 N (16-22 kg / 35.3-48.5 lbs)

Part number

A-73130FK-Y.C1_X

Fixings Y

details page 26



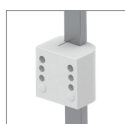
4S

Adapter for vertical wall channel



2F

Horizontal rail clamp



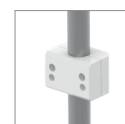
3

Vertical rail clamp



1V

Universal pole clamp



1
1B
1F
1C

Fixed pole clamp



13

Adapter for Mindray medical supply units



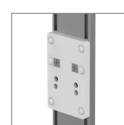
17

Adapter for Amico pendants & headwalls



19

Adapter for Dräger Ambia pendants & headwalls



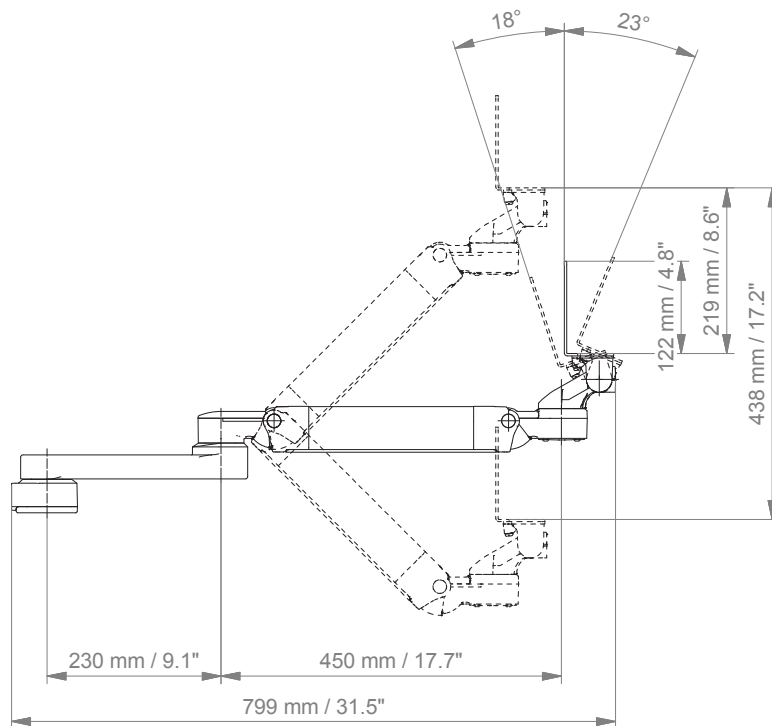
9

Adapter for Löwenstein Medical / ITD / mounting channel

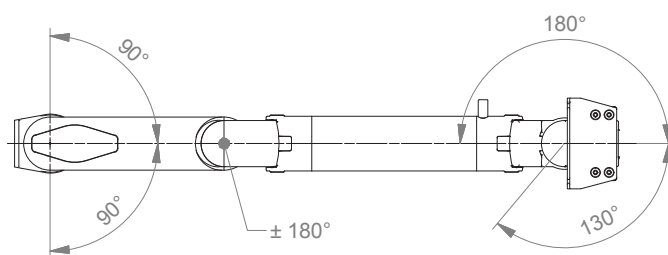
Extended height adjustable arm

Technical data

SIDE VIEW



TOP VIEW



Brackets for super unit and super unit with gas module



Part no. FK-SU.1
Bracket for super unit



Part no. IR-SU-PR.1
Bracket for super unit with gas module



Illustration with pivot support arm and bracket for super unit with gas module

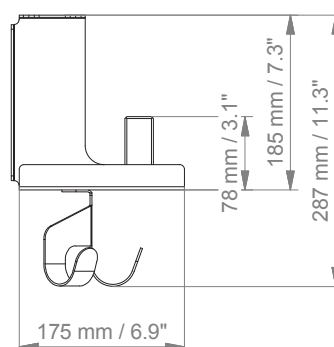
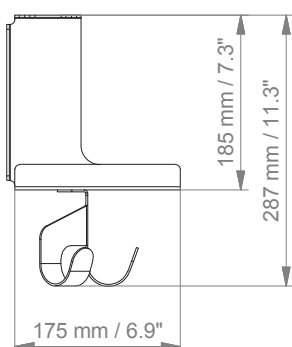
Brackets for super unit and super unit with gas module

Technical data

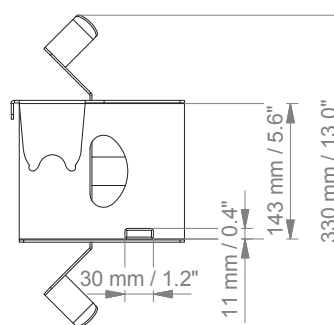
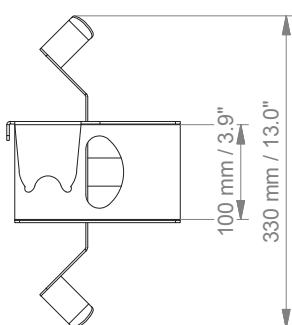
Super unit

Super unit with gas module

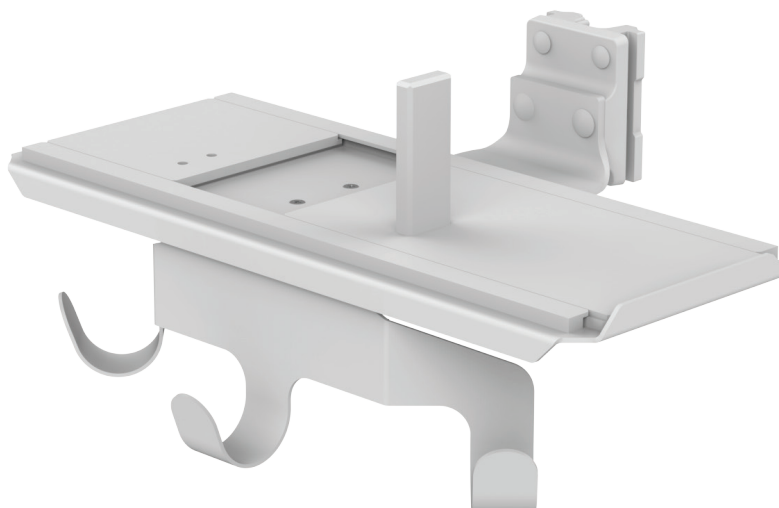
SIDE VIEW



TOP VIEW



Wall-mounted bracket for parameter units

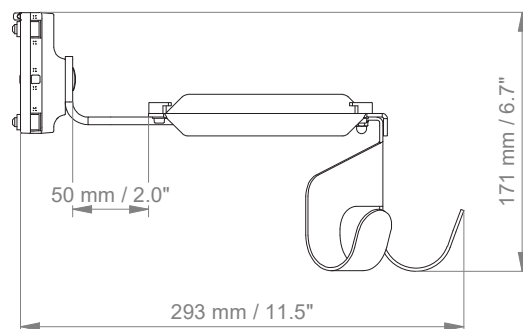
MD

Part no. FK-FKU-4S.1

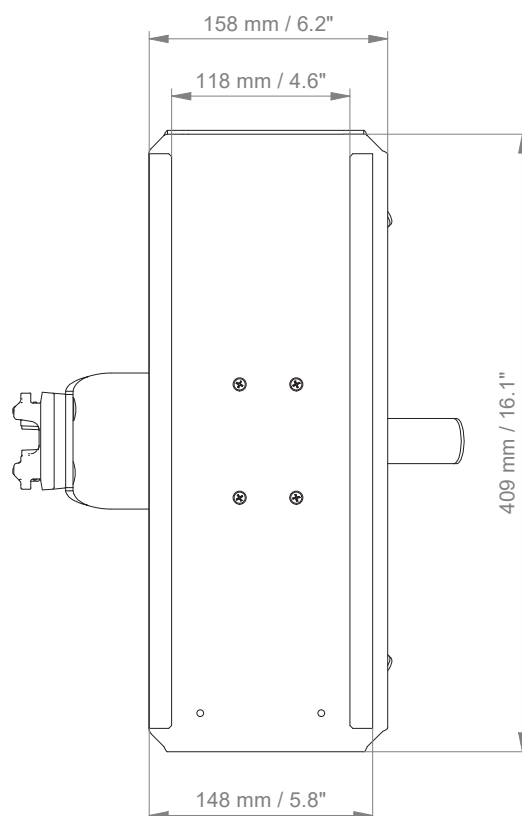
Wall-mounted bracket for parameter units

Technical data

SIDE VIEW



TOP VIEW



Support arm pivot for parameter units

MD



Monitor adaption

Fukuda tray for Parameter Units

Colours to choose C

decorative parts RAL 5013 cobalt blue / RAL 7024 graphite grey
aluminum parts RAL 9016 traffic white

Max. load capacity support arm

18 kg / 39.7 lbs

Max. load monitor adaption

18 kg / 39.7 lbs

Product weight

arm type 240 arm type 300
3.2 kg / 7.1 lbs 3.3 kg / 7.3 lbs

Part number

arm type 240 arm type 300
A-224FKU-Y.C1 A-230FKU-Y.C1

Fixings Y

details page 26



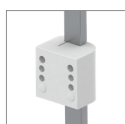
4S

Adapter for
vertical wall channel



2F

Horizontal rail clamp



3

Vertical rail clamp



1V

Universal pole clamp



1
1B
1F
1C

Fixed pole clamp



13

Adapter for Mindray
medical supply units



17

Adapter for Amico
pendants & headwalls



19

Adapter for Dräger Ambia
pendants & headwalls



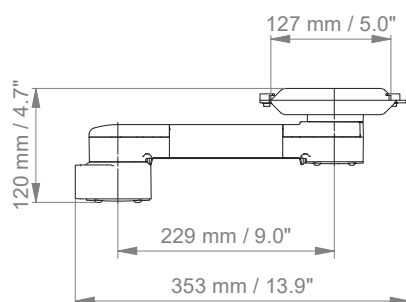
9

Adapter for Löwenstein Medical /
ITD / mounting channel

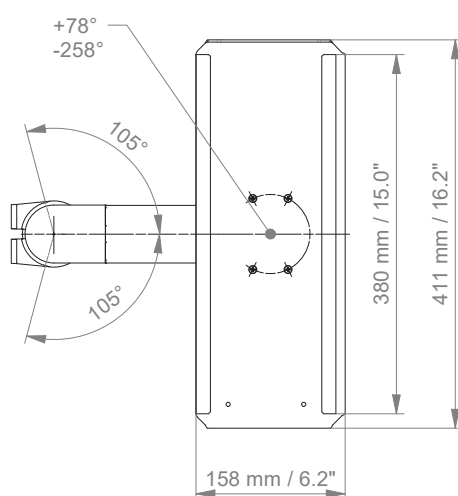
Support arm pivot for parameter units

Technical data - arm type 300

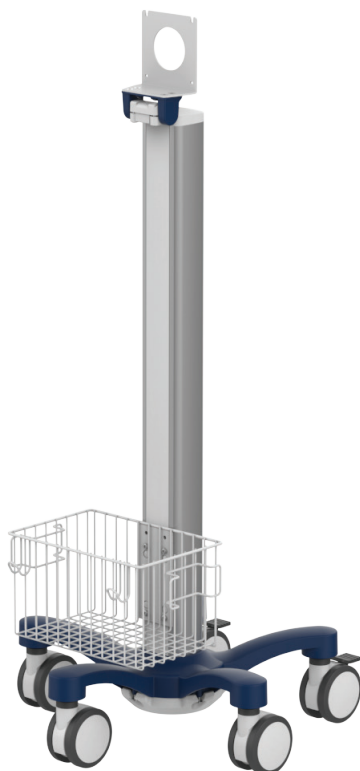
SIDE VIEW



TOP VIEW



Cart light duty - Fukuda bracket

MD


Monitor adaption

Fukuda mounting adapter

Accessories

5-star base aluminum base with counter weight
double wheel castors, \varnothing 100 mm / 3.9", 2 lockable
column to accept components and accessories on opposite sides

Colours

decorative parts RAL 5013 cobalt blue
base RAL 5013 cobalt blue
handle RAL 5013 cobalt blue

Max. load capacity

14 kg / 30.9 lbs

Optional accessories

wall-mounted bracket for parameter units
basket big 300 x 200 x 180 mm / 11.8 x 7.9 x 7.1"
basket small 200 x 150 x 100 mm / 7.9 x 5.9 x 3.9"
handle

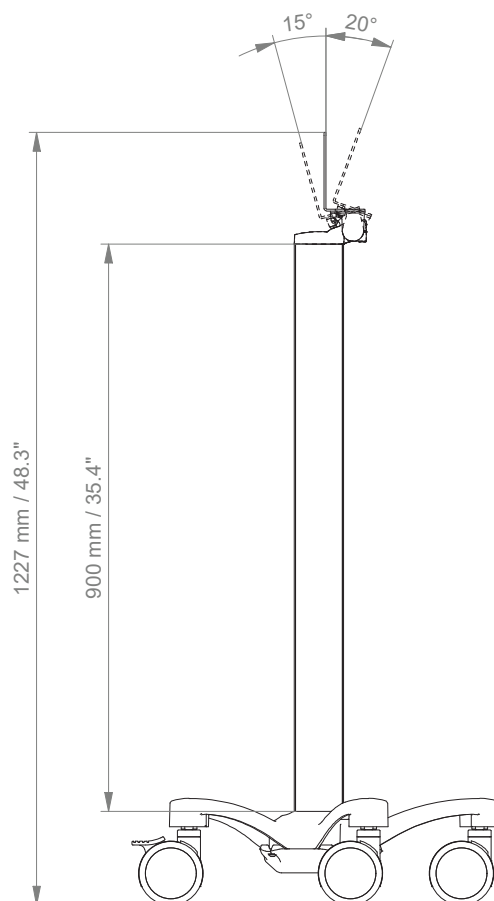
Part number

cart	R-002FK.bl6
basket big	Z-51-4Z.1
basket small	Z-52-4Z.1
handle	Z-HD-4.bl1

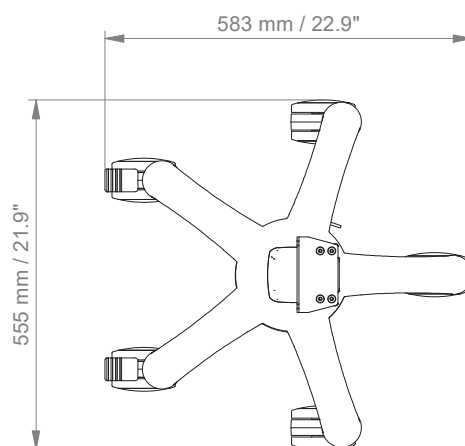
Cart light duty - Fukuda bracket

Technical data

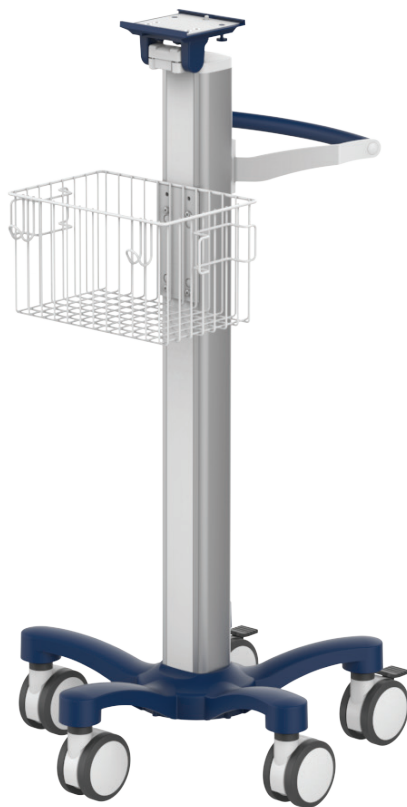
SIDE VIEW



TOP VIEW



Cart light duty - monitoring kit

MD


Monitor adaption

5" plunge plate with tilt function

Accessories

5-star base aluminum base without counter weight
double wheel castors, ø 100 mm / 3.9", 2 lockable
column to accept components and accessories on opposite sides

Colours

decorative parts RAL 5013 cobalt blue
base RAL 5013 cobalt blue
handle RAL 5013 cobalt blue

Max. load capacity

7 kg / 15.4 lbs

Kit number

FK-002A.bl6

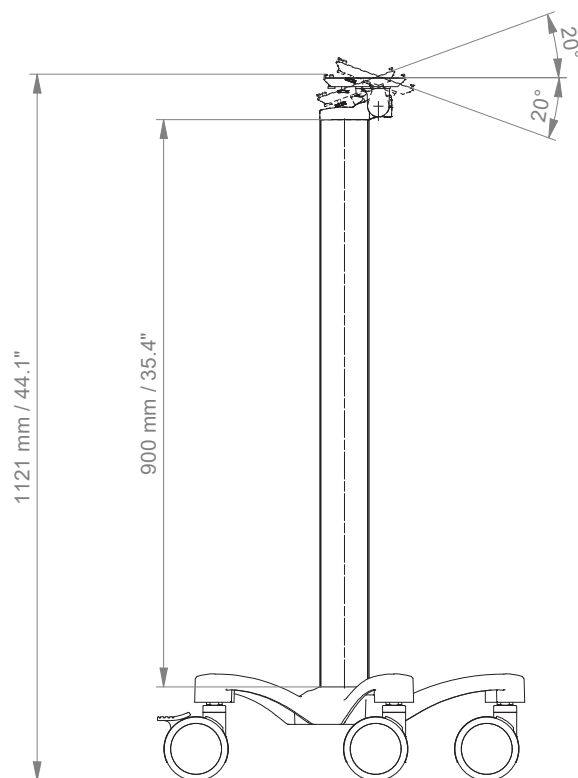
Consisting of the following parts:

R-002A.bl6	cart light duty
Z-51-4Z.1	basket big
Z-HD-4.bl1	handle

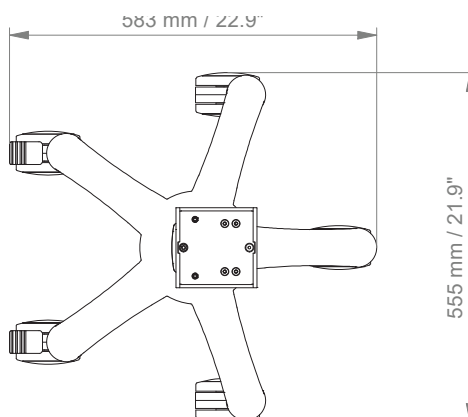
Cart light duty - monitoring kit

Technical data

SIDE VIEW




TOP VIEW



Monitor-specific mounting adapter



Type of monitor	Description	Part No.	
DS-7000 Series, DS-8100, DSL-8001	Mounting adapter for 5" plunge plate	FK-AP-DS7	
Fukuda mounting adapter Please order this additionally with Fukuda.			
DSL-8001	Mounting adapter for 5" plunge plate	OA0-57A	
DSC-8400, DSA-81, DSA-82	Mounting adapter for 5" plunge plate	OA0-70A	

Fixings Y



Illustration	Description	Notes	Weight	Part no.
	Adapter for vertical wall channel	To mount to CIM wall channel (compatible with GCX channel) Please order separately: CIM wall channel, see catalogue accessoires	0.6 kg / 1.3 lbs	4S
	Horizontal rail clamp	To mount to horizontal European rails 10 x 25, 8 x 35, 10 x 30, 10 x 50 mm	1.1 kg / 2.4 lbs	2F
	Vertical rail clamp	To mount to vertical European rail 10 x 25 mm	0.5 kg / 1.1 lbs	3
	Universal pole clamp	V-block to mount to pole ø 23 - 40 mm / 0.9 - 1.6"	0.6 kg / 1.3 lbs	1V
	Fixed pole clamp	To mount to pole ø 25 mm / 1.0" To mount to pole ø 30 mm / 1.2" To mount to pole ø 35 mm / 1.4" To mount to pole ø 38 mm / 1.5"	0.3 kg / 0.7 lbs 0.4 kg / 0.9 lbs 0.4 kg / 0.9 lbs 0.4 kg / 0.9 lbs	1 1B 1F 1C
	Adapter medical supply units	For Mindray medical supply units	0.8 kg / 1.8 lbs	13
	Adapter pendants & headwalls	For Amico pendants & headwalls	0.6 kg / 1.3 lbs	17
	Adapter pendants & headwalls	For Dräger Ambia pendants & headwalls	0.6 kg / 1.3 lbs	19
	Adapter pendants & headwalls	For Löwenstein Medical / ITD / mounting channels	0.4 kg / 0.9 lbs	9



CIM med GmbH

Euro-Industriepark
Margot-Kalinke-Str. 9
80939 Munich / Germany

T +49 89. 978 94 08-0

CIM med Inc.

University Executive Park
301 McCullough Drive, Suite 400
Charlotte NC, 28262 / USA

T +1 704 221 0721

info@cim-med.com
www.cim-med.com

