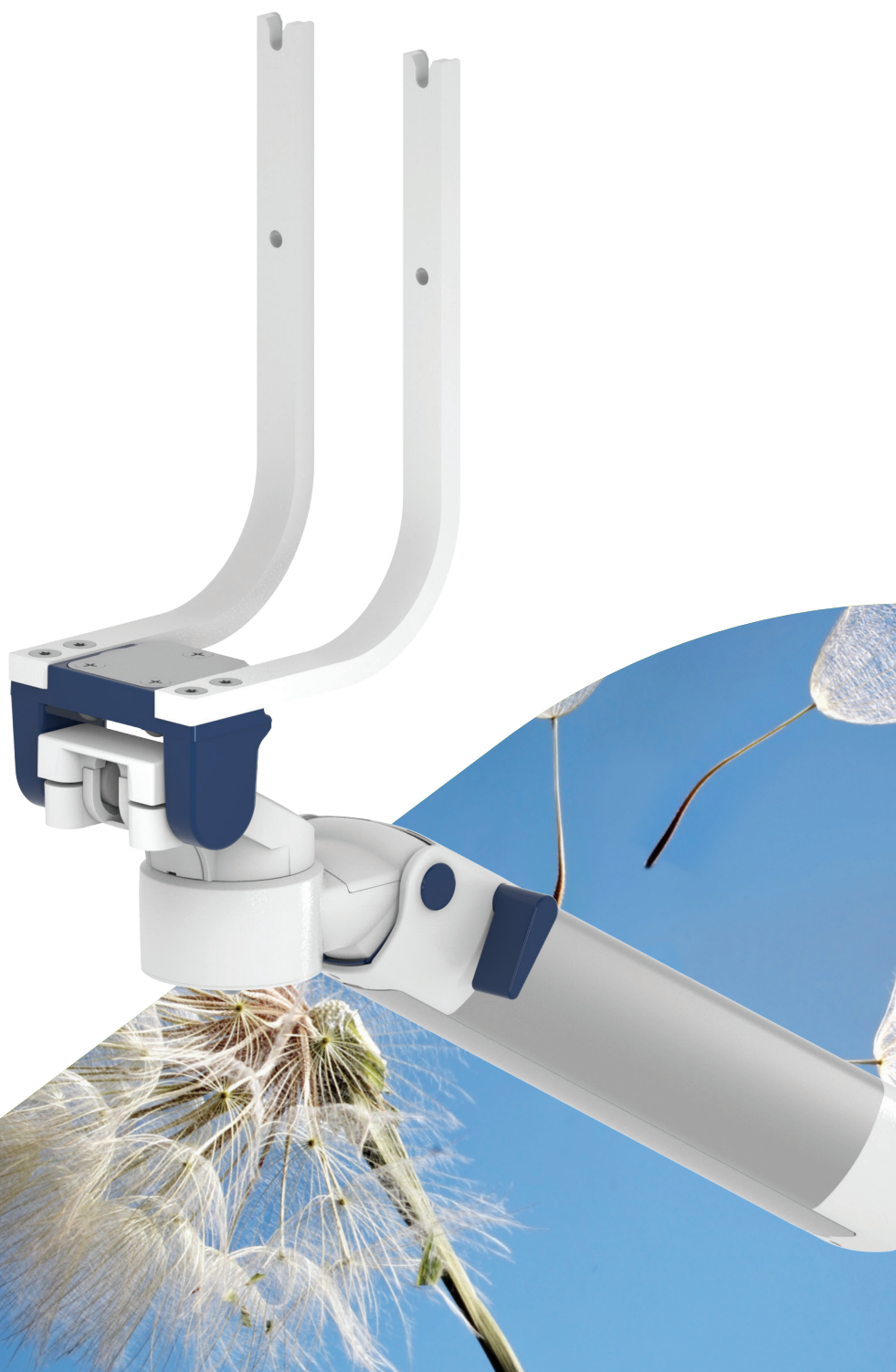




MOUNTING REFERENCE GUIDE

# Spacelabs Monitoring Xprezzon®

CIM Cable Integrated Mounting System



THINK BEFORE  
YOU PRINT



# Notes

General notes	3
How to create part numbers	4
Product highlights	6
Flush mount Xprezzon Display	7
Support arm pivot Xprezzon Display	9
Support arm pivot Xprezzon Backpack	11
Height adjustable arm Xprezzon Display	13
Height adjustable arm Xprezzon Backpack	15
Extended height adjustable arm Xprezzon Display	17
Extended height adjustable arm Xprezzon Backpack	19
High position height adjustable arm Xprezzon Display	21
High position height adjustable arm Xprezzon Backpack	23
Extended high position height adjustable arm Xprezzon Display	25
Extended high position height adjustable arm Xprezzon Backpack	27
Cart light duty Xprezzon Display	29
Xprezzon monitor support	31
Fixings	32

## General notes

### Backpack solution for Xprezzon

All mounting solutions for the backpack solution are provided with centered VESA monitor adaptation in order to guarantee smooth and safe tilt operation.

Please order the “O” bracket separately with Spacelabs (Spacelabs part no. 016-0899-00).

### Components' grounding

All arms with integrated cable management are equipped with **component grounding**. No grounding is required for arms with external or semi-integrated cable management with cables not being led through joints.

### Load capacity

All **height adjustable arms** have a load capacity of 22 kg / 48.5 lbs. Rear mounted monitor adaptations and horizontally mounted 5“ plunge plates accept a maximum monitor weight of 18 kg / 39.7 lbs. An additional 4 kg / 8.8 lbs may be mounted on a down post underneath the front swivel part. Depending on material and tensile factor all weight indications have a 4-fold and/ or 6-fold safety factor according to IEC 60601-1 standards.

### Custom-designed solutions and MRI applications

Please contact us for **custom-designed** solutions.

### Product marking

All products which are classified as medical product risk class 1 are CE marked. As **medical product risk class 1** they are conform with the regulations (EU) 2017/745 (MDR) and IEC 60601-1. Other standards of the IEC 60601 series are not applicable to our products, regardless of their version.

**MD** A stand-alone product that is already classified as a medical product class 1 before being integrated into an overall medical device. The product is CE-marked. A declaration of conformity is available.

**NO** Accessories or spare parts that have no independent function and are therefore not subject to the MDR. These products are not CE-marked. A declaration of conformity is not required.

### Warranty

All CIM products have a 5-year warranty to be free of defects in material and functionality from the date of delivery.

## How to find the right product for your needs?

No problem with our configurator

<https://cim-configurator.com>



# How to create part numbers

Part numbers can be easily created by following the steps below:

Please replace the letters in **green** with the part no. code as per your requirements.

## 1. Components' grounding:

S	=	not grounded
A	=	grounded

## 2. Choose the arm version required:

910G	=	flush mount Xpresson Display
224G / 230G	=	pivot arm Xpresson Display
224SLX / 230SLX	=	pivot arm Xpresson Backpack
431G	=	height adjustable arm Xpresson Display
431SLX	=	height adjustable arm Xpresson Backpack
73130G	=	extended height adjustable arm Xpresson Display
73130SLX	=	extended height adjustable arm Xpresson Backpack
531G	=	high position height adjustable arm Xpresson Display
531SLX	=	high position height adjustable arm Xpresson Backpack
83130G	=	extended high position height adjustable arm Xpresson Display
83130SLX	=	extended high position height adjustable arm Xpresson Backpack

## 3. Specify where you want to mount the arm and select the fixing (Y):

1V	=	pole ø 23 - 40 mm / 0.9 - 1.6"
1	=	pole ø 25 mm / 1.0"
1B	=	pole ø 30 mm / 1.2"
1F	=	pole ø 35 mm / 1.4"
1C	=	pole ø 38 mm / 1.5"
2F	=	horizontal rails 10 x 25, 8 x 35, 10 x 30, 10 x 50 mm
3	=	vertical rail 10 x 25 mm
4S	=	vertical wall channel
9	=	Löwenstein Medical / ITD / mounting channel
13	=	Mindray medical supply units
17	=	Amico pendants & headwalls
19	=	Dräger Ambia pendants & headwalls

## How to create part numbers

### 4. Choose the colour requested for decorative parts (C):

gr	=	RAL 7024 (graphite grey)
bl	=	RAL 5013 (cobalt blue)

### 5. Choose the colour requested for the aluminium die-cast parts (D):

1	=	RAL 9016 (traffic white)
2	=	RAL 9002 (grey white)

### 6. Specify the spring depending on the weight of your monitor/ device - only with height adjustable arms (X):

95	=	4 - 9 kg / 8.8 - 19.8 lbs (Xprezzon Display)
175	=	13 - 16 kg / 28.7 - 35.3 lbs (Xprezzon Backpack)

## Example

01 Grounding		02 Arm version		03 Fixing		04 & 05 Colour		06 Spring tension
A	-	431SLX	-	Y	.	CD	-	X
A	-	431SLX	-	4S	.	gr1	-	95



## Product highlights

---

### Non-height adjustable arm

Pivot and extended pivot arms offer **full cable integration** and easy cleaning for **infection control** in all critical care areas in the clinical environment. Our **5-years warranty** guarantees reliable, trouble-free and maintenance-free operation. The swivel function at the fixing point as well as the **tilt/ swivel function** of the monitor adaptation offers optimum positioning of your device. The extended pivot arm is a two-part arm with central pivot point between the two arm sections. All bottom-mounted monitors have the safety feature of a **20° tilt stop**.

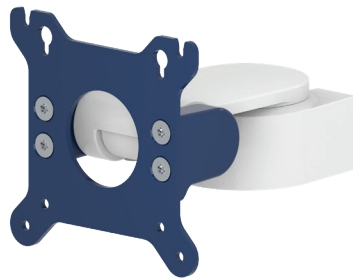
### Height adjustable arm

The height adjustable arm offers **full cable integration**, one-wipe clean surfaces and our **5-year warranty** on the entirety of the product. Vertically and horizontally adjustable, the arm offers optimal positioning of your device. A constant viewing angle when vertically adjusted is guaranteed by a parallel linkage. **Weight-optimized springs counter-balance** the monitor without making any adjustments. All bottom-mounted monitors have the safety feature of a **20° tilt stop**. Individual rotational stops may be integrated in any joint.

To provide the perfect combination of arm and monitor, the CIM articulated height adjustable arm has a simple quarter-turn lock to hold the arm safely in position when removing the monitor. Furthermore the arm is equipped with the unique safety feature of a slow-release gas spring. Should anybody try to remove the monitor before locking the arm in position, the arm will only rise at a slow and even tempo.

**SAFETY**

# Flush mount Xprezzon Display

**MD**


## Monitor adaption

VESA 75/100

## Colours to choose **CD**

decorative parts RAL 5013 cobalt blue / RAL 7024 graphite grey  
aluminum parts RAL 9016 traffic white / RAL 9002 grey white

## Max. load capacity support arm

18 kg / 39.7 lbs

## Max. load monitor adaption

18 kg / 39.7 lbs

## Product weight

1 kg / 2.2 lbs

## Part number

S-910G-**Y.CD**

## Fixings **Y**

details page 32



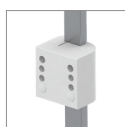
**4S**

Adapter for  
vertical wall channel



**2F**

Horizontal rail clamp



**3**

Vertical rail clamp



**1V**

Universal pole clamp



**1  
1B  
1F  
1C**

Fixed pole clamp



**13**

Adapter for Mindray  
medical supply units



**17**

Adapter for Amico  
pendants & headwalls



**19**

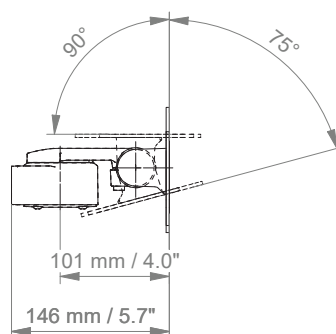
Adapter for Dräger Ambia  
pendants & headwalls

# Flush mount Xprezzon Display

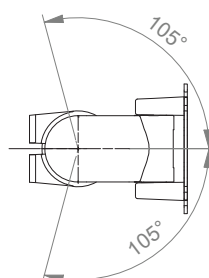
## Technical data

---

### SIDE VIEW



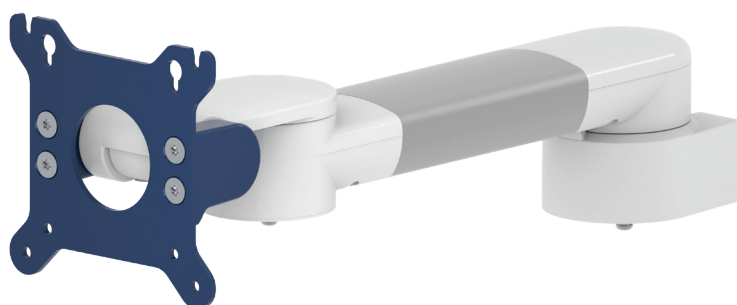
### TOP VIEW





# Support arm pivot Xprezzon Display

MD



## Monitor adaption

VESA 75/100

## Colours to choose **CD**

decorative parts RAL 5013 cobalt blue / RAL 7024 graphite grey  
aluminum parts RAL 9016 traffic white / RAL 9002 grey white

## Max. load capacity support arm

18 kg / 39.7 lbs

## Max. load monitor adaption

18 kg / 39.7 lbs

## Product weight

arm type 240 1.8 kg / 4.0 lbs  
arm type 300 1.9 kg / 4.2 lbs

## Part number

A-224G-**Y.CD** arm type 240  
A-230G-**Y.CD** arm type 300

## Fixings **Y**

details page 32



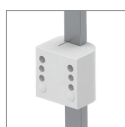
4S

Adapter for  
vertical wall channel



2F

Horizontal rail clamp



3

Vertical rail clamp



1V

Universal pole clamp



1  
1B  
1F  
1C

Fixed pole clamp



13

Adapter for Mindray  
medical supply units



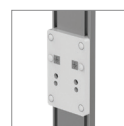
17

Adapter for Amico  
pendants & headwalls



19

Adapter for Dräger Ambia  
pendants & headwalls



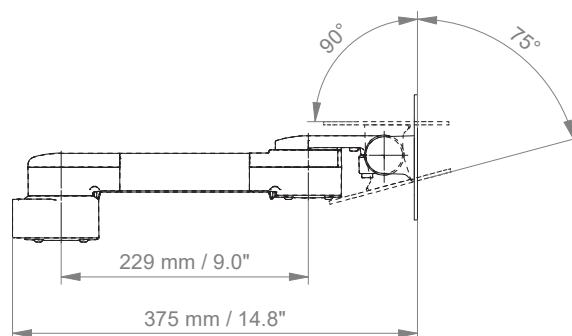
9

Adapter for Löwenstein Medical /  
ITD / mounting channel

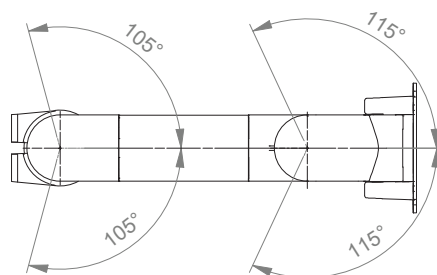
# Support arm pivot Xprezzon Display

Technical data - arm type 300

## SIDE VIEW



## TOP VIEW



# Support arm pivot Xprezzon Backpack

MD



## Monitor adaption

Spacelabs VESA 75 Backpack (monitor & display)

## Colours to choose CD

decorative parts RAL 5013 cobalt blue / RAL 7024 graphite grey  
aluminum parts RAL 9016 traffic white / RAL 9002 grey white

## Max. load capacity support arm

17 kg / 37.5 lbs

## Max. load monitor adaptation

17 kg / 37.5 lbs

## Product weight

arm type 240 2.7 kg / 6.0 lbs  
arm type 300 2.8 kg / 6.2 lbs

## Part number

A-224SLX-Y.CD arm type 240  
A-230SLX-Y.CD arm type 300

## Fixings Y

details page 32



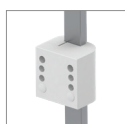
4S

Adapter for vertical wall channel



2F

Horizontal rail clamp



3

Vertical rail clamp



1V

Universal pole clamp



1  
1B  
1F  
1C

Fixed pole clamp



13

Adapter for Mindray medical supply units



17

Adapter for Amico pendants & headwalls



19

Adapter for Dräger Ambia pendants & headwalls



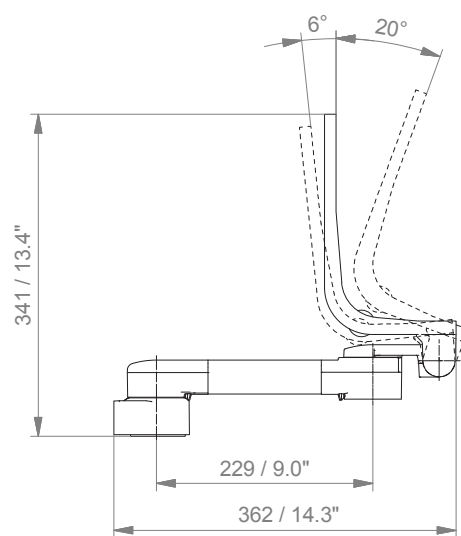
9

Adapter for Löwenstein Medical / ITD / mounting channel

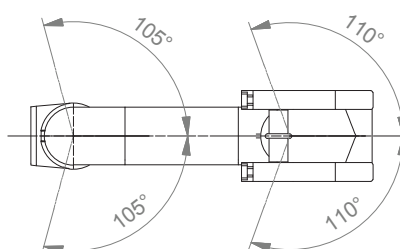
# Support arm pivot Xprezzon Backpack

Technical data - arm type 300

## SIDE VIEW

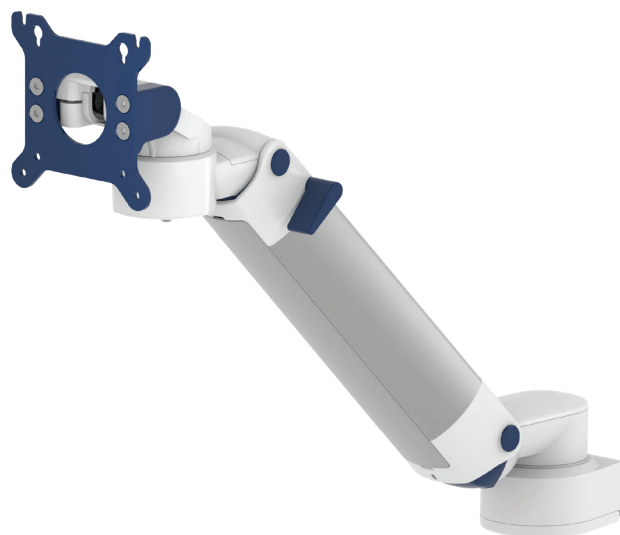


## TOP VIEW



# Height adjustable arm Xprezzon Display

MD



<b>Monitor adaption</b>	VESA 75/100
<b>Height adjustment</b>	slow-flowing spring, parallel linkage for a constant viewing angle
<b>Colours to choose</b> <b>CD</b>	decorative parts RAL 5013 cobalt blue / RAL 7024 graphite grey aluminum parts RAL 9016 traffic white / RAL 9002 grey white
<b>Max. load capacity support arm</b>	22 kg / 48.5 lbs
<b>Max. load monitor adaptation</b>	18 kg / 39.7 lbs
<b>Product weight</b>	3.8 kg / 8.4 lbs
<b>Balancing range</b>	950 N (4-9 kg / 8.8-19.8 lbs)
<b>Part number</b>	A-431G-Y <b>CD</b> _95

## Fixings **Y**

details page 32



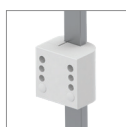
4S

Adapter for vertical wall channel



2F

Horizontal rail clamp



3

Vertical rail clamp



1V

Universal pole clamp



1  
1B  
1F  
1C

Fixed pole clamp



13

Adapter for Mindray medical supply units



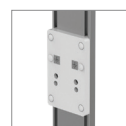
17

Adapter for Amico pendants & headwalls



19

Adapter for Dräger Ambia pendants & headwalls



9

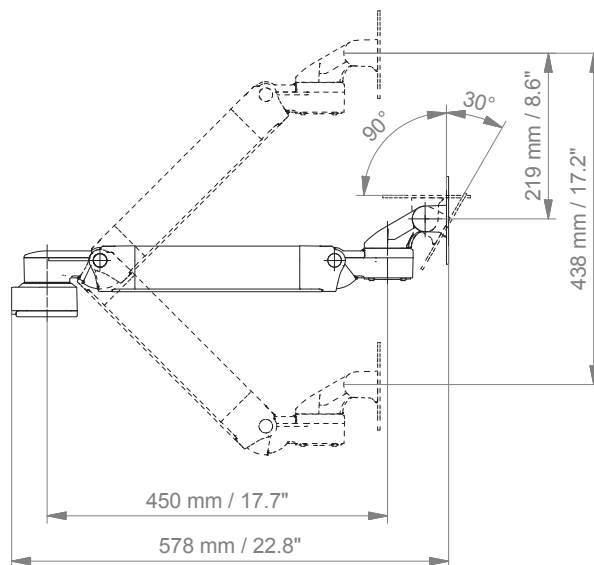
Adapter for Löwenstein Medical / ITD / mounting channel



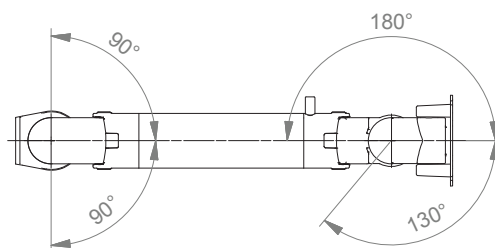
# Height adjustable arm Xprezzon Display

## Technical data

### SIDE VIEW



### TOP VIEW



# Height adjustable arm Xprezzon Backpack

MD



## Monitor adaption

Spacelabs VESA 75 Backpack (monitor & display)

## Height adjustment

slow-flowing spring, parallel linkage for a constant viewing angle

## Colours to choose **CD**

decorative parts RAL 5013 cobalt blue / RAL 7024 graphite grey  
aluminum parts RAL 9016 traffic white / RAL 9002 grey white

## Max. load capacity support arm

21 kg / 46.3 lbs

## Max. load monitor adaption

18 kg / 39.7 lbs

## Product weight

4.7 kg / 10.4 lbs

## Balancing range

1750 N (13-16 kg / 28.7-35.3 lbs)

## Part number

A-431SLX-**Y**.**CD**\_175

## Fixings **Y**

details page 32



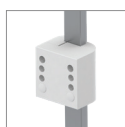
4S

Adapter for vertical wall channel



2F

Horizontal rail clamp



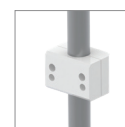
3

Vertical rail clamp



1V

Universal pole clamp



1  
1B  
1F  
1C

Fixed pole clamp



13

Adapter for Mindray medical supply units



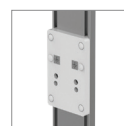
17

Adapter for Amico pendants & headwalls



19

Adapter for Dräger Ambia pendants & headwalls



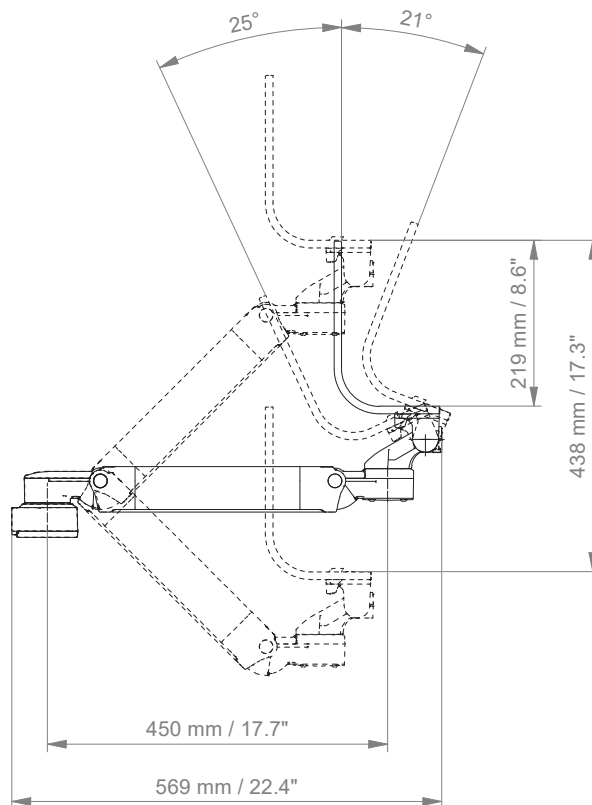
9

Adapter for Löwenstein Medical / ITD / mounting channel

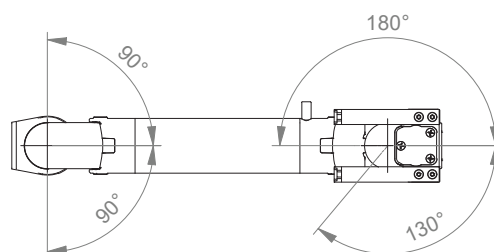
# Height adjustable arm Xprezzon Backpack

## Technical data

### SIDE VIEW

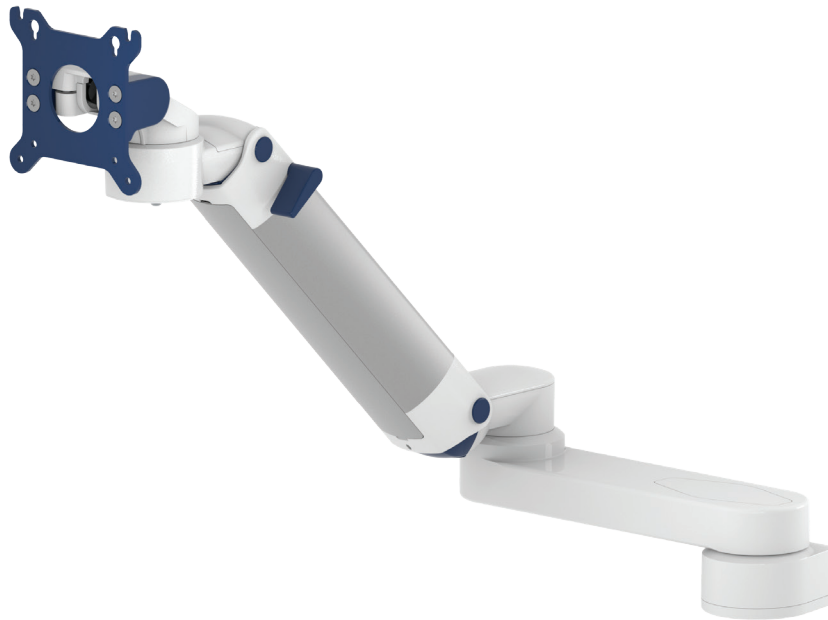


### TOP VIEW



# Extended height adjustable arm Xprezzon Display

MD



<b>Monitor adaption</b>	VESA 75/100
<b>Height adjustment</b>	slow-flowing spring, parallel linkage for a constant viewing angle
<b>Colours to choose</b> <b>CD</b>	decorative parts RAL 5013 cobalt blue / RAL 7024 graphite grey aluminum parts RAL 9016 traffic white / RAL 9002 grey white
<b>Max. load capacity support arm</b>	22 kg / 48.5 lbs
<b>Max. load monitor adaptation</b>	18 kg / 39.7 lbs
<b>Product weight</b>	4.8 kg / 10.6 lbs
<b>Balancing range</b>	950 N (4-9 kg / 8.8-19.8 lbs)
<b>Part number</b>	A-73130G-Y.CD_95

## Fixings **Y**

details page 32



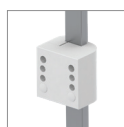
4S

Adapter for vertical wall channel



2F

Horizontal rail clamp



3

Vertical rail clamp



1V

Universal pole clamp



1  
1B  
1F  
1C

Fixed pole clamp



13

Adapter for Mindray medical supply units



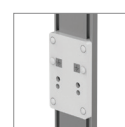
17

Adapter for Amico pendants & headwalls



19

Adapter for Dräger Ambia pendants & headwalls



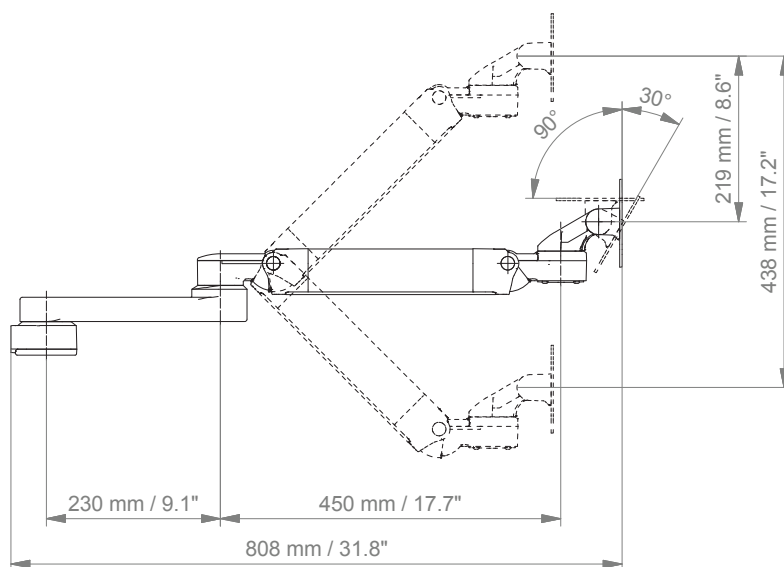
9

Adapter for Löwenstein Medical / ITD / mounting channel

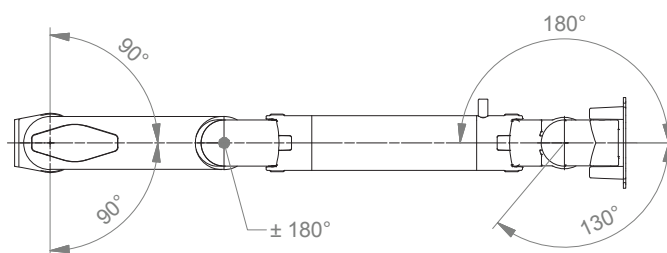
# Extended height adjustable arm Xprezzon Display

## Technical data

### SIDE VIEW



### TOP VIEW





# Extended height adjustable arm Xprezzon Backpack

MD



## Monitor adaption

Spacelabs VESA 75 Backpack (monitor & display)

## Height adjustment

slow-flowing spring, parallel linkage for a constant viewing angle

## Colours to choose **CD**

decorative parts RAL 5013 cobalt blue / RAL 7024 graphite grey  
aluminum parts RAL 9016 traffic white / RAL 9002 grey white

## Max. load capacity support arm

21 kg / 46.3 lbs

## Max. load monitor adaption

18 kg / 39.7 lbs

## Product weight

5.8 kg / 12.8 lbs

## Balancing range

1750 N (13-16 kg / 28.7-35.3 lbs)

## Part number

A-73130SLX-Y.**CD**\_175

## Fixings **Y**

details page 32



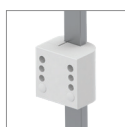
4S

Adapter for  
vertical wall channel



2F

Horizontal rail clamp



3

Vertical rail clamp



1V

Universal pole clamp



1  
1B  
1F  
1C

Fixed pole clamp



13

Adapter for Mindray  
medical supply units



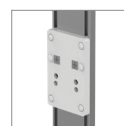
17

Adapter for Amico  
pendants & headwalls



19

Adapter for Dräger Ambia  
pendants & headwalls



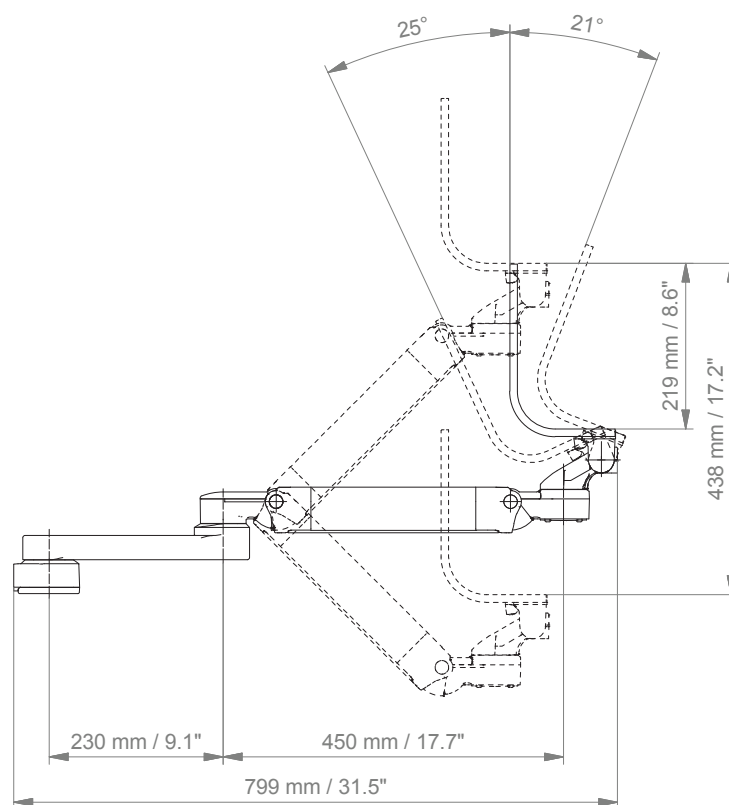
9

Adapter for Löwenstein Medical /  
ITD / mounting channel

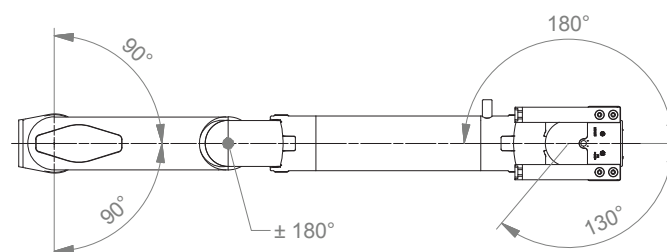
# Extended height adjustable arm Xprezzon Backpack

## Technical data

### SIDE VIEW

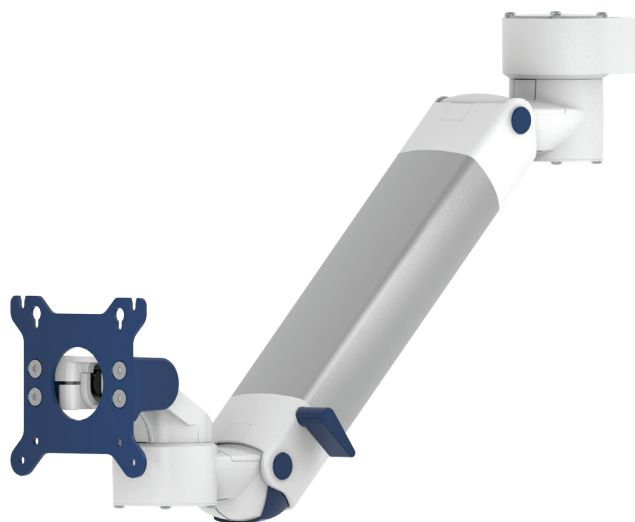


### TOP VIEW



# High position height adjustable arm Xprezzon Display

MD



<b>Monitor adaption</b>	VESA 75/100
<b>Height adjustment</b>	slow-flowing spring, parallel linkage for a constant viewing angle
<b>Colours to choose</b> <b>CD</b>	decorative parts RAL 5013 cobalt blue / RAL 7024 graphite grey aluminum parts RAL 9016 traffic white / RAL 9002 grey white
<b>Max. load capacity support arm</b>	22 kg / 48.5 lbs
<b>Max. load monitor adaptation</b>	18 kg / 39.7 lbs
<b>Product weight</b>	4.1 kg / 9.0 lbs
<b>Balancing range</b>	950 N (4-9 kg / 8.8-19.8 lbs)
<b>Part number</b>	A-531G-Y.CD_95

## Fixings **Y**

details page 32



**4S**

Adapter for  
vertical wall channel



**3**

Vertical rail clamp



**1V**

Universal pole clamp



**1**

**1B**

**1F**

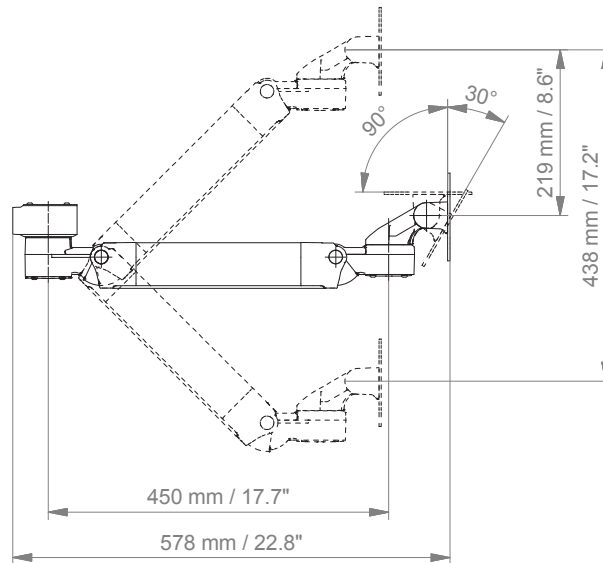
**1C**

Fixed pole clamp

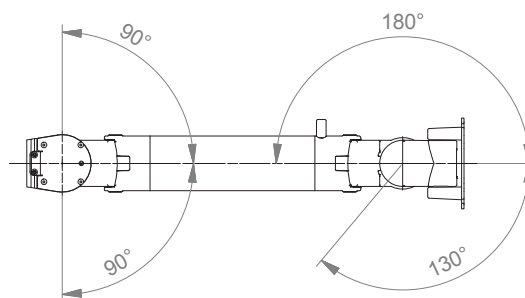
# High position height adjustable arm Xprezzon Display

## Technical data

### SIDE VIEW



### TOP VIEW



# High position height adjustable arm Xprezzon Backpack

**MD**


## Monitor adaption

Spacelabs VESA 75 Backpack (monitor & display)

## Height adjustment

slow-flowing spring, parallel linkage for a constant viewing angle

## Colours to choose **CD**

decorative parts RAL 5013 cobalt blue / RAL 7024 graphite grey  
aluminum parts RAL 9016 traffic white / RAL 9002 grey white

## Max. load capacity support arm

21 kg / 46.3 lbs

## Max. load monitor adaptation

18 kg / 39.7 lbs

## Product weight

5.1 kg / 11.2 lbs

## Balancing range

1750 N (13-16 kg / 28.7-35.3 lbs)

## Part number

A-531SLX-**Y****CD**\_175

## Fixings **Y**

details page 32


**4S**

Adapter for  
vertical wall channel


**3**

Vertical rail clamp


**1V**

Universal pole clamp


**1**
**1B**
**1F**
**1C**

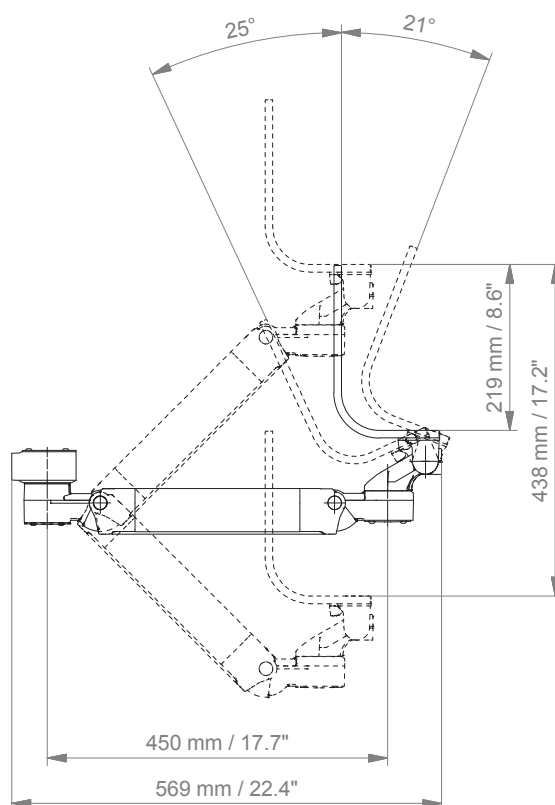
Fixed pole clamp



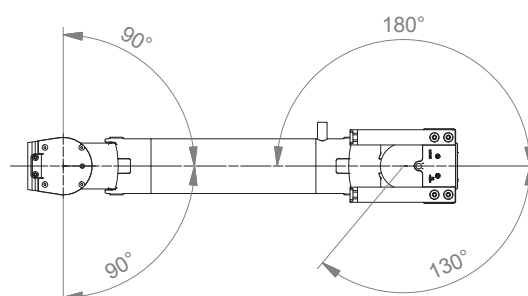
# High position height adjustable arm Xprezzon Backpack

## Technical data

### SIDE VIEW

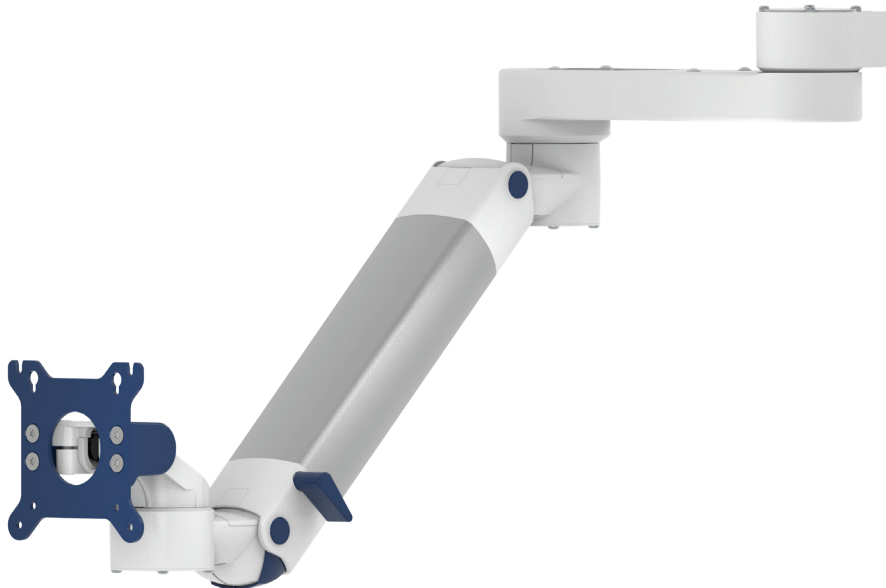


### TOP VIEW



# Extended high position height adjustable arm Xprezzon Display

MD



<b>Monitor adaption</b>	VESA 75/100
<b>Height adjustment</b>	slow-flowing spring, parallel linkage for a constant viewing angle
<b>Colours to choose</b> <b>CD</b>	decorative parts RAL 5013 cobalt blue / RAL 7024 graphite grey aluminum parts RAL 9016 traffic white / RAL 9002 grey white
<b>Max. load capacity support arm</b>	22 kg / 48.5 lbs
<b>Max. load monitor adaptation</b>	18 kg / 39.7 lbs
<b>Product weight</b>	5.3 kg / 11.7 lbs
<b>Balancing range</b>	950 N (4-9 kg / 8.8-19.8 lbs)
<b>Part number</b>	A-83130G-Y.CD_95

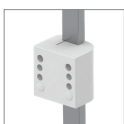
## Fixings **Y**

details page 32



4S

Adapter for vertical wall channel



3

Vertical rail clamp



1V

Universal pole clamp



1

1B

1F

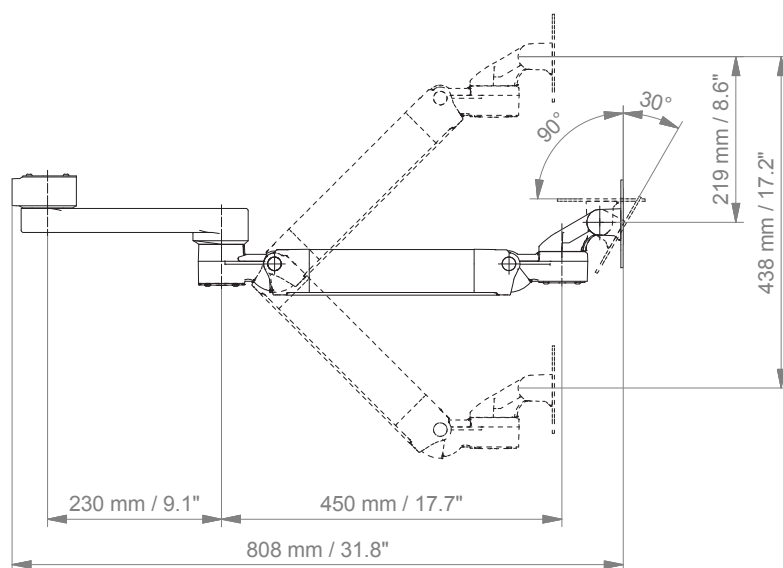
1C

Fixed pole clamp

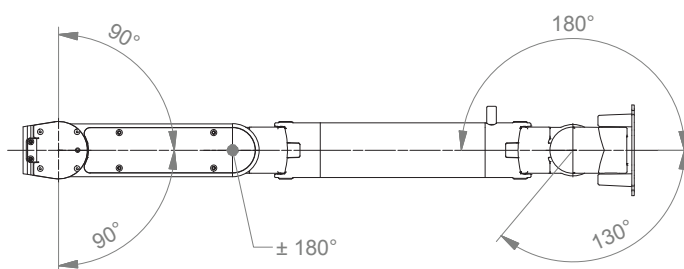
# Extended high position height adjustable arm Xprezzon Display

## Technical data

### SIDE VIEW



### TOP VIEW



# Extended high position height adjustable arm Xprezzon Backpack

**MD**


## Monitor adaption

Spacelabs VESA 75 Backpack (monitor & display)

## Height adjustment

slow-flowing spring, parallel linkage for a constant viewing angle

## Colours to choose **CD**

decorative parts RAL 5013 cobalt blue / RAL 7024 graphite grey  
aluminum parts RAL 9016 traffic white / RAL 9002 grey white

## Max. load capacity support arm

21 kg / 46.3 lbs

## Max. load monitor adaptation

18 kg / 39.7 lbs

## Product weight

6.2 kg / 13.7 lbs

## Balancing range

1750 N (13-16 kg / 28.7-35.3 lbs)

## Part number

A-83130SLX-Y.**CD**\_175

## Fixings **Y**

details page 32


**4S**

Adapter for  
vertical wall channel


**3**

Vertical rail clamp


**1V**

Universal pole clamp

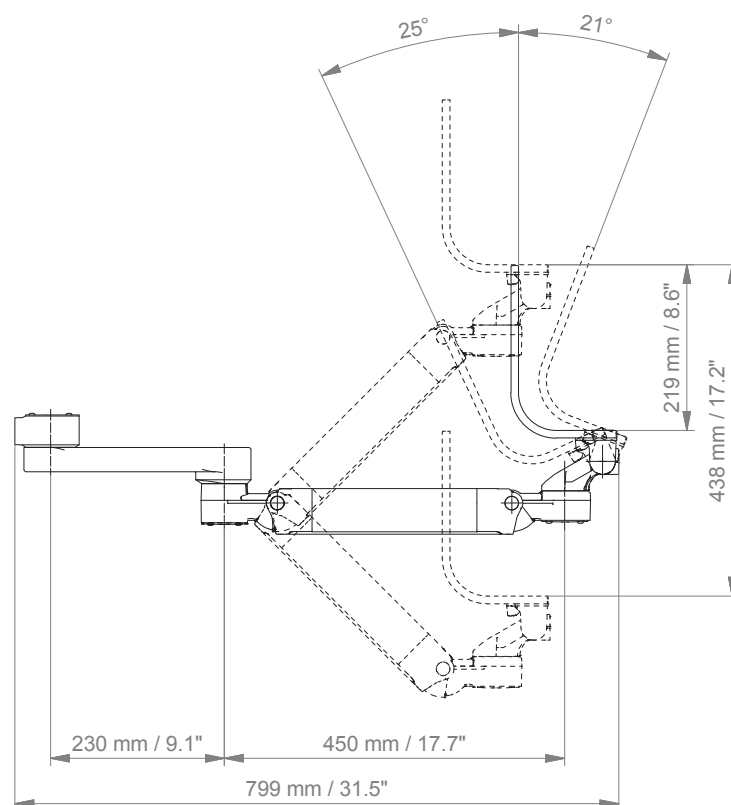

**1**
**1B**
**1F**
**1C**

Fixed pole clamp

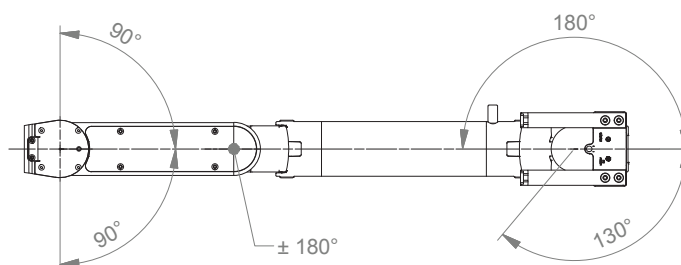
# Extended high position height adjustable arm Xprezzon Backpack

## Technical data

### SIDE VIEW



### TOP VIEW





# Cart light duty Xprezzon Display

**MD**

## Example configuration



### Monitor adaption

CL-bracket, VESA 75/100

### Accessories

5-star base aluminum base with counter weight  
double wheel castors, ø 100 mm / 3.9", 2 lockable  
column to accept components and accessories on opposite sides

### Colours to choose **CD**

decorative parts RAL 5013 blue / RAL 7024 graphite grey  
base RAL 9016 pure white  
handle RAL 9016 pure white / RAL 5013 blue / RAL 7024 graphite grey

### Max. load capacity

10 kg / 22 lbs

### Optional accessories

basket big 300 x 200 x 180 mm / 11.8 x 7.9 x 7.1"  
basket small 200 x 150 x 100 mm / 7.9 x 5.9 x 3.9"  
handle

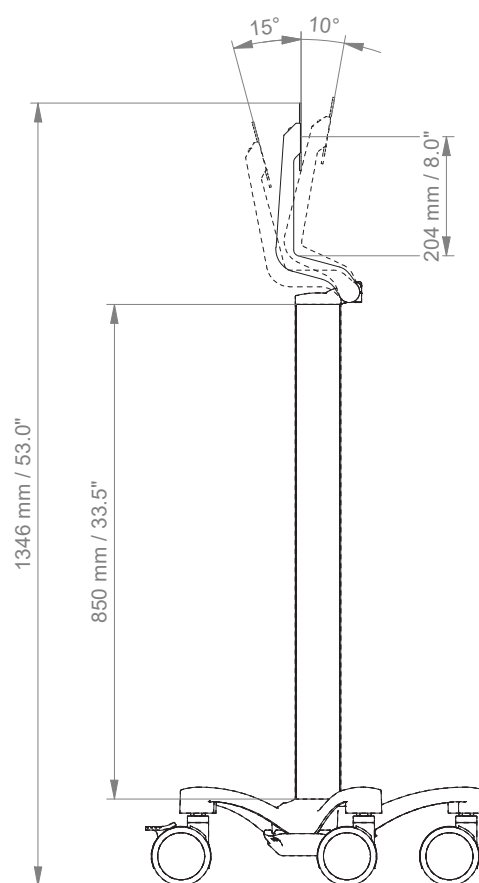
### Part number

R-002K. <b>CD</b>	cart
Z-51-4Z.1	basket big
Z-52-4Z.1	basket small
Z-HD-4. <b>C1</b>	handle

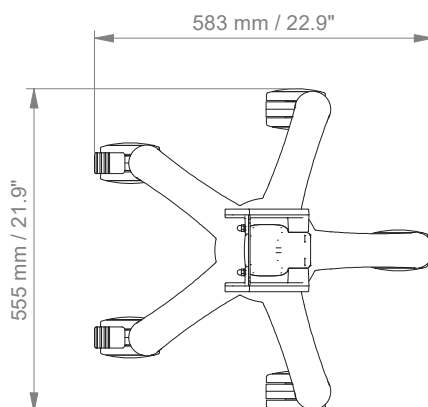
# Cart light duty Xprezzon Display

## Technical data

### SIDE VIEW



### TOP VIEW



# Xprezzon monitor support

MD

The Xprezzon monitor and display can be mounted separately. Please order the “0” bracket with Spacelabs.



**Part no.** SL-XP-4Z  
Vertical wall channel / cart column profile



**Part no.** SL-XP-6H  
Horizontal European rail  
10 x 25 mm, 8 x 35 mm, 10 x 30 mm, 10 x 50 mm



**Part no.** SL-XP-3  
Vertical European rail 10 x 25 mm



**Part no.** SL-XP-1V  
Pole  $\varnothing$  23 - 40 mm / 0.9 - 1.6"

## Fixings Y



Illustration	Description	Notes	Weight	Part no.
	Adapter for vertical wall channel	To mount to CIM wall channel (compatible with GCX channel) Please order separately: CIM wall channel, see catalogue accessoires	0.6 kg / 1.3 lbs	4S
	Horizontal rail clamp	To mount to horizontal European rails 10 x 25, 8 x 35, 10 x 30, 10 x 50 mm	1.1 kg / 2.4 lbs	2F
	Vertical rail clamp	To mount to vertical European rail 10 x 25 mm	0.5 kg / 1.1 lbs	3
	Universal pole clamp	V-block to mount to pole ø 23 - 40 mm / 0.9 - 1.6"	0.6 kg / 1.3 lbs	1V
	Fixed pole clamp	To mount to pole ø 25 mm / 1.0" To mount to pole ø 30 mm / 1.2" To mount to pole ø 35 mm / 1.4" To mount to pole ø 38 mm / 1.5"	0.3 kg / 0.7 lbs 0.4 kg / 0.9 lbs 0.4 kg / 0.9 lbs 0.4 kg / 0.9 lbs	1 1B 1F 1C
	Adapter medical supply units	For Mindray medical supply units	0.8 kg / 1.8 lbs	13
	Adapter pendants & headwalls	For Amico pendants & headwalls	0.6 kg / 1.3 lbs	17
	Adapter pendants & headwalls	For Dräger Ambia pendants & headwalls	0.6 kg / 1.3 lbs	19
	Adapter pendants & headwalls	For Löwenstein Medical / ITD / mounting channels	0.4 kg / 0.9 lbs	9

**CIM med GmbH**

Euro-Industriepark  
Margot-Kalinke-Str. 9  
80939 Munich / Germany

T +49 89. 978 94 08-0

---

**CIM med Inc.**

University Executive Park  
301 McCullough Drive, Suite 400  
Charlotte NC, 28262 / USA

T +1 704 221 0721

---

[info@cim-med.com](mailto:info@cim-med.com)  
[www.cim-med.com](http://www.cim-med.com)

